

# U.S. Navy Seabee Cruise book

CEC/Seabee Historical Foundation  
Civil Engineer Corps and Seabee Museum  
1000 23<sup>rd</sup> Avenue, Bldg. 99, Code HO  
Port Hueneme, Ca 93043-4301  
October 20, 2001

Volunteers copied this Compact Disk from original cruise books at the CEC/Seabee Museum Library at Port Hueneme. All copying was done for historical preservation purposes and to raise funds for the CEC/Seabee Historical Foundation.

***This CD is protected under U.S. Copyright laws. No copies shall be made without the written permission from the CEC/Seabee Historical Foundation.***

This CD was made possible by the following Foundation volunteers:

- Project Leader.....Robert Quinn, Captain, CEC,USN Ret.
- Project coordinator  
& Team Leader #1.....Paul J. Doyle, Commander retired.
- Team Leader #2           Ken Bingham MCB-8, 1966-69

The Foundation wishes to thank the following for their advice and assistance:

- Carol Marsh:.....NAVFAC Command Historian
- Lara Bickell : .....Archivist
- Arthur K. Samora :.....Legal advice
- Andrea King.....Store Manager

The Foundation also wishes to thank the following for their donations of equipment material, or funds, to support this project:

- MCB-8 Association.
- Steve Thomas of Steve Thomas BMW: Former member of MCB-4 ,1967-68.  
In memory of Ronald Harrison MCB-4, Equipment Operator Third Class, KIA Vietnam.
- Vietnam Era Seabees (VNES)
- Navy Seabee Veterans Of America , Island X-7 Port Hueneme
- Paradise Chevrolet, Ventura
- Kinko's, Main St. Ventura
- Pugh & Associates, Ventura
- Ventura County Star Newspaper
- Staples Store

- © 2001 CEC/Seabee Historical Foundation. All Rights Reserved.

The following volunteer has scanned this cruise book:  
SK2(SCW) Nicola Richards





MCB-62





NORTH  
VIETNAM

GULF OF TONKIN

LAOS

MCB 62

HUE - PHU BAI

DA NANG

THAILAND

QUANG NGAI

BONG S

QUI

DAK TO

PLEIKU

PLEI ME

SOUTH  
VIET  
NAM

CAMBODIA

LOC NINH

BIEN HOA

SAIGON

PHAN THIET

GULF OF SIAM

VINH LONG

PHU VINH





為東方旅遊勝地。

NHA TRANG  
CAM RANH

**MCB 62**

1967

SOUTH  
CHINA SEA



**ARMY & NAVY**  
PUBLISHING COMPANY  
(A Private Business Enterprise)  
2736 Florida, Baton Rouge, La.





---

**“WE DID”**

---



# Dedication

*The officers and men of Mobile Construction Battalion 62 dedicate the following pages of this book to the men who gave their lives while serving their country in Viet Nam. We will always remember each of the seabees who, in life and death, has shown that freedom has a price that is never completely paid. They have made the supreme sacrifice for freedom and at the same time have honored the traditions of the Seabees. To these men we pay humble tribute:*

*Murlin E. Boon*

*Francis E. Camden, Jr.*

*James H. Daulton*

*who made the supreme sacrifice, this book is dedicated.*





# HISTORY

Mobile Construction Battalion 62 derived its numerical designation from a Naval Construction Battalion that gained World War II fame. The original NCB 62 was commissioned on December 30, 1942, at Davisville, Rhode Island. After two short months of training the Battalion left for its embarkation point, Port Hueneme, California. Lieutenant Commander Rudolph Y. Taggart was the outfit's Officer-in-charge.

On March 24 NCB 62 boarded the transport ship MATSONIA, bound for Pearl Harbor.

Until early September 1944 the Battalion stayed in Hawaii, constructing repair and servicing facilities for the Pearl Harbor Submarine Base, completing a dike at Loko Eo, building landing craft facilities at Waipio Point, and much more. Over two million yards of fill material were moved on the Loko Eo dike alone.

A small detachment from NCB 62 went to the Island of Angaur, in the West Carolines, to set up pontoon docks. These men became the first of the Battalion's Seabees to encounter the enemy when they were fired upon by Japanese snipers.

In September of 1944 the Battalion finished its work in Hawaii and underwent two weeks of jungle training at Sweetheart Valley, Oahu, in preparation for the big job ahead—Iwo Jima. NCB 62 then moved to the Island of Maui for two months of amphibious, marine and weapons training.

The Iwo Jima task force left Saipan on February 16, 1945. The ships carrying NCB 62 all got safely through to beach their cargoes of men and machines despite kamikaze raids by the Japanese. The first shipload was ashore at 10 p.m. of D-Day (February 19) plus five. By 2 a.m. of D-Day plus seven, the whole Battalion was ashore.

The Japanese attacked with mortars that night.

The Battalion's job at Iwo Jima was to get three bombed-out Japanese airfields back into shape as quickly as possible. The Seabees did just that—heavy equipment operators were at work on the first airfield, clearing off wrecked Japanese planes and filling bomb craters the first day the Battalion was on Iwo Jima.

The dozer drivers had to duck from snipers' bullets, fight off banzai attacks and jump for cover every time the Japanese mortars opened up on them. But work on the Number One airfield went on day and night. On D-Day plus 12, work was begun on the Number Two airfield.

The Seabees spent a total of five months improving Central Airfield. When they were finished, they had moved over three million yards of earth and were in possession of the longest airstrip—5225 feet—in the western Pacific.

On V-J Day, August 14, 1945, NCB 62 was among 13 Construction Battalions and three Special Battalions awaiting assignment to Japan, where they were to aid Naval forces at various cities.

The 62nd Naval Construction Battalion was inactivated on September 15, 1945, at Yokosuka, Japan.



In 1945, the 62d Naval Construction Battalion started work on this taxiway on Iwo Jima



Complete airstrip on Iwo Jima, 1945. Mt. Suribachi in background



# COMMANDING OFFICER

WILLIAM J. RICHESON  
Commander  
CEC, USN



## message

*All hands deserve a "Well Done" for the outstanding manner in which MCB SIXTY-TWO completed its initial overseas deployment. In six short months, from the recommissioning and organization phases through the technical and military training cycles at our homeport, we saw our Battalion drawn together into a functioning unit ready to meet any assigned tasks.*

*In early December 1966 the challenge began as we arrived in Phu Bai. In bone-chilling monsoon rains and lateritic mud our Battalion turned to. In spite of weather extremes which turned to choking powdery dust and 100° temperatures midway through our deployment, we met production schedules with flexibility, ingenuity and good humor.*

*We left many significant items of construction that materially assisted our Marine comrades in furthering our country's efforts in the Republic of Viet Nam. Each one of us can be proud to be a contributing part of that effort.*





# EXECUTIVE OFFICER

JESSIE R. WILLIAMS  
Commander  
CEC, USN

## message



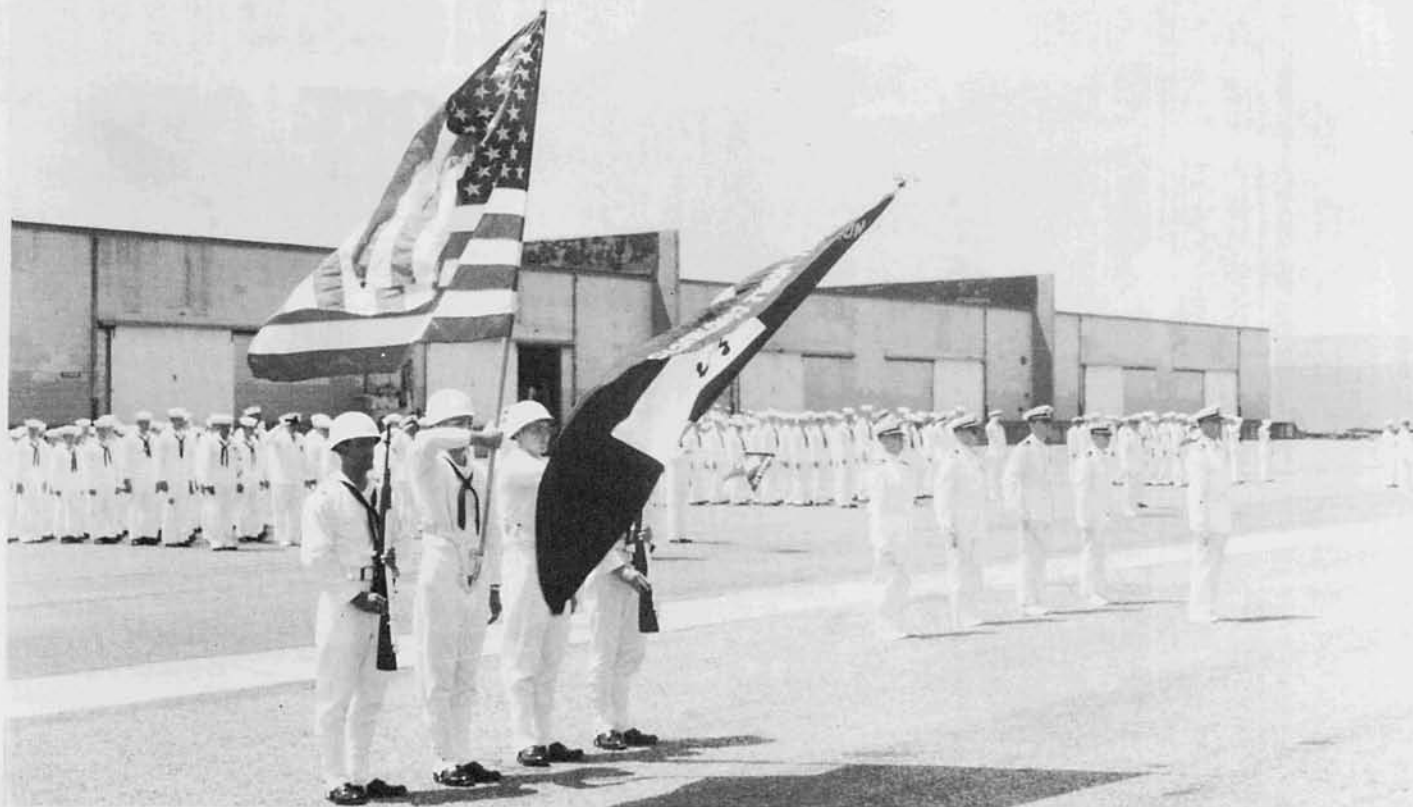
*Seabees are a proud lot, and proud you may be. For in the time of need — of our country and the oppressed people of Vietnam — you gave the sweat of your brow and the muscle of your backs.*

*Though most of our work was in the Phu Bai Combat Base, The "Can Do 62" will be remembered — from the rocky hills of Phu Loc to the ancient wall of Hue, from the barren fields of Gia Le to the Tonkin Gulf at Col Co, in Dong Ha, Than Phu and Phu Bai III.*

*From heavy equipment to heavy construction, in security, and the support of our Fleet Seabees — all did a magnificent job.*







# Commissioning Ceremony

UNITED STATES NAVAL MOBILE  
CONSTRUCTION BATTALION

SIXTY-TWO

2 JULY 1966

1000 HOURS



Rear Admiral H. A. Renken, USN  
Commander, Service Forces  
U.S. Atlantic Fleet  
and commissioning party  
being piped aboard



Commander Richeson reads his orders from the Bureau of Naval Personnel directing him to assume command of NMCB-62.



U.S. Naval Mobile Construction 62 is now in commission.

Rear Admiral A. C. Husband presents the new Commanding Officer with the Navy Unit Commendation earned by the 62nd Naval Construction Battalion on Iwo Jima during World War II.

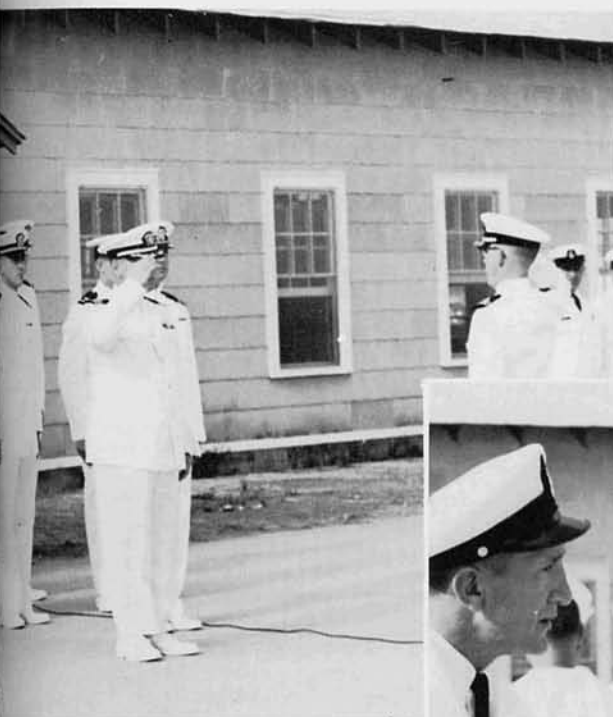








# The Home Port Deployment Gulfport, Mississippi



The "Home Port" deployment begins with long hot hours of inspection that kept us on our toes. During the five months of preparation and outfitting, we engaged in extensive physical, technical and combat training. P.T. was an everyday thing, followed by schooling in the Group Eight trades. Combat training consisted of two weeks at CBC and Camp Shelby, followed by four weeks of intensive combat maneuvers with 1/8 Marines at Camp LeJeune, North Carolina.

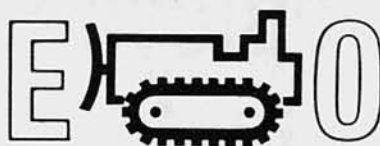


A Saturday morning event was our first full dress inspection. We formed up early on the grinder and checked uniforms for last minute "Irish Pennants." The Battalion Adjutant called us to attention, reported us formed for inspection and the Commanding Officer's party began checking the ranks. We looked good.





## Equipment Operators



## STEELWORKER

Steelworkers erect and dismantle steel structures; assemble and rig construction equipment; construct staging and platforms; connect structural beams and fabricated sections; form, condition, and join units and sections of ferrous and nonferrous metals and sheet metal, rivet sheet metal ducts and panels and reinforcing steel.

## EQUIPMENT OPERATOR

Equipment Operators operate and service automotive, materials-handling, and paving equipment, stationary processing plants, construction and earthmoving equipment; transport personnel and materials, read and follow grades stakes in excavating, filling, and grading areas to specifications; perform operator's service checks on vehicles and forklifts; operate asphalt plants, rock-crushing plants, shovels and cranes; adapt cable assemblies and change attachments on equipment; dispatch and maintain required records for assigned equipment.



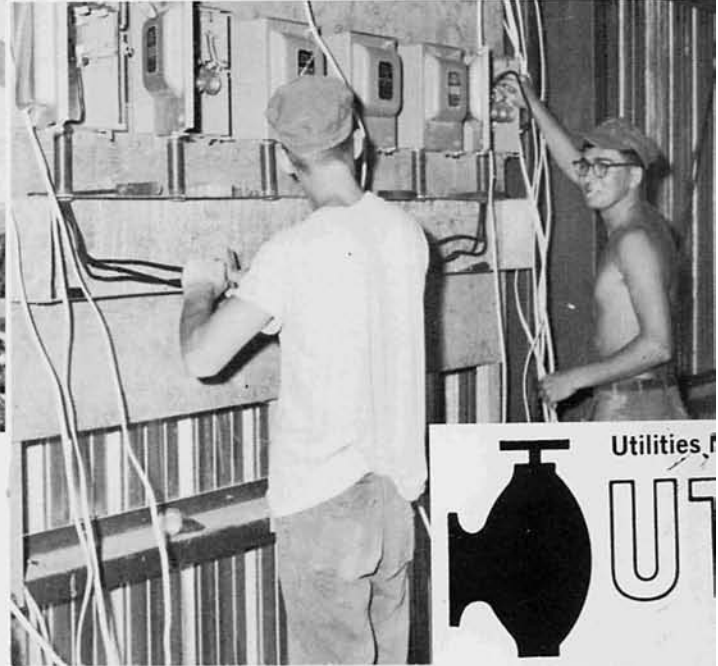
## ENGINEERING AID

Engineering Aids prepare, edit, and file construction drawings, plans, sketches, tracings, and maps; operate machines to reproduce drawings; prepare material estimates and bills of material, make reconnaissance, preliminary, final location, and construction surveys; operate, adjust, and maintain transits, levels, and other surveying instruments; keep field notes; plot maps, cross sections, and profiles, and perform engineering tests on soils, concrete, and construction materials.



## BUILDER

Builders construct, maintain, and repair wooden structures, position piles for driving, fabricate and erect forms for concrete, erect and repair prefabricated buildings, finish new and repaired surfaces; mix, place, and finish concrete; lay or set masonry, and manufacture concrete pipes and blocks.



## CONSTRUCTION MECHANIC

Construction Mechanics service, perform preventive maintenance on, repair and overhaul materials-handling equipment, automotive vehicles, gasoline and diesel engines, air compressors, internal-combustion prime movers of arc welders, electric generators, and mobile water distillation and purification units; and locate, analyze, and correct faulty conditions in this equipment.

## Construction Mechanics



## UTILITIESMAN

Utilitiesmen install, operate, service, and repair air conditioning and refrigeration equipment, steam boilers, galley equipment; assemble piping and repair water distillation and purification equipment and pumps, and make chemical tests to determine safety and potability of water.

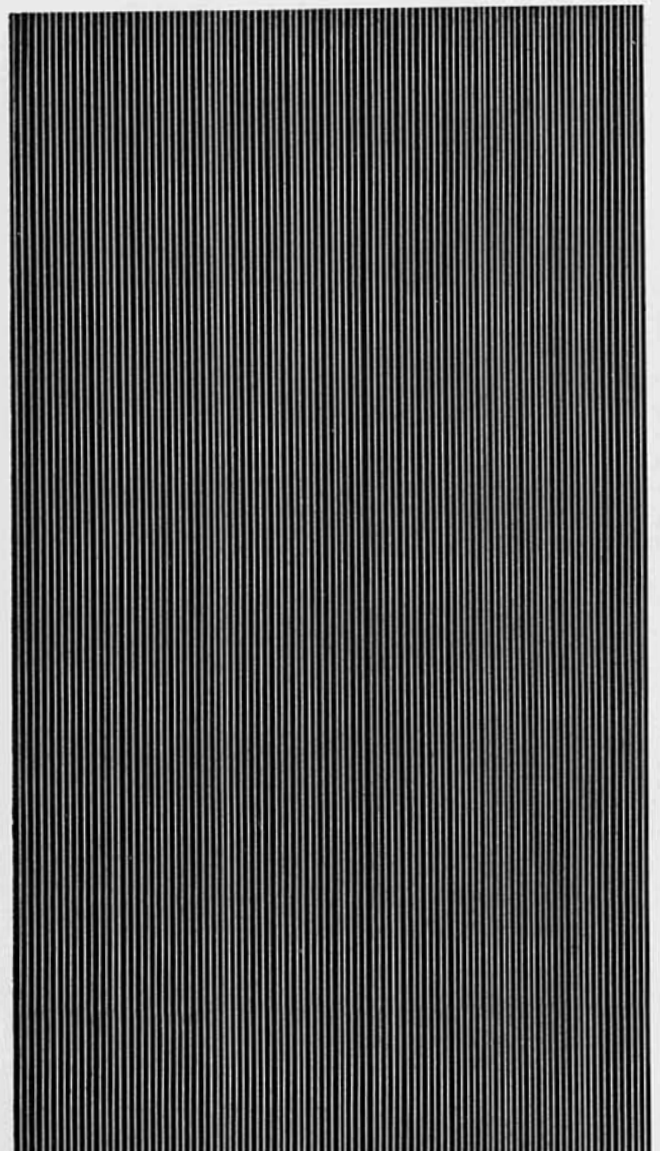


## CONSTRUCTION ELECTRICIAN

Construction Electricians install, operate, and service electric generating and distribution systems, electric appliances, wire communication systems, interior wiring systems, and secondary electric distribution circuits, overhead and underground.









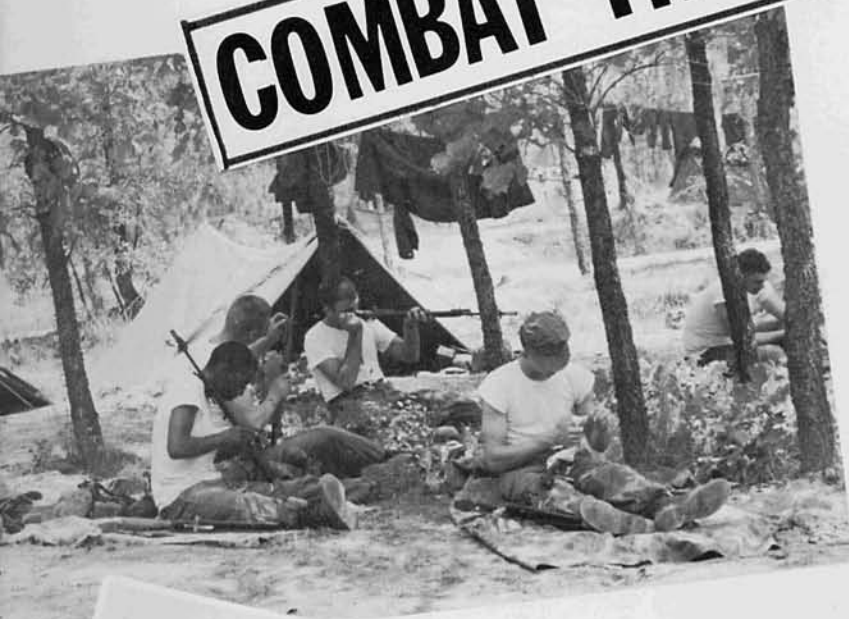
**COMBAT TRAINING:**

*Camp Shelby*  
*Camp LeJeune*





# COMBAT TRAINING BEGINS









The first week of our four weeks Marine Corps-type training at Camp LeJeune, North Carolina was more marksmanship, with both .45 caliber pistol and M-14 rifle. Some scored high, some not so high, but all were ready for a break at the end of the day.





During the succeeding weeks, some of us went through the Counter-Guerrilla Warfare School, others to the Demolition Course or Field Communications School. But through it all, our good corpsmen made sure we were ready, *in all respects*, to deploy.







Trained in both military and professional skills, we were ready. And finally, on 5 December 1966, we were on our way.

Next Stop,  
PHU BAI, VIET NAM



62







# ALPHA COMPANY

With his background of experience and technical know-how, LT Hale and his two assistants, LTJG Schneider and CW02 Allemand, led Alpha Company of MCB 62 successfully through its first deployment since being recommissioned on 2 July 1966.

Some of the more significant jobs performed by Alpha Company during this deployment include the following:

The VMO, Marine Helicopter Landing Pad, proved to be the longest, hardest, and most demanding project worked on by the men of Alpha Company. It started in the dark, wet, dreary days which were common early in the deployment. For days on end, twenty-four hours a day, the men "wallowed" around in the quicksand with their giant earthmovers. One month after the monsoons ended, VMO was ready for use in support of combat operations. Completed were twenty acres of soil cement surrounded by taxi ways, access roads, and drainage ditches. An additional 7 acres were prepared and compacted for an M8A1 mat parking apron adjacent to the soil cement.

Steadiest of all the jobs was the perpetual hauling of supplies and parts from the Hue Ramp to Phu Bai. The rough roads, long hauls, and hostile country between, made for a long and dangerous day behind the wheel.

The urgent need for rock necessitated the start and development of a quarry. Literally over night we established a foot hold at Gia Le and started blasting away at the hill. But no matter how hard the "Quarry Rats" tried they couldn't produce good hard rock. The hill contained nothing but soft laterite-rock.

Roadwork, building and maintenance, comprised a significant portion of our endeavors. Miles of roadway serving the Third Marine Division complex required the excavation of existing materials and the placing of thousands of cubic yards of road sub-base material. In addition, the road crews faced a continuous maintenance and upgrading job on National Route One, where the security of a Marine fire team was most welcome.

The company clerks were responsible for keeping the paper work flowing for our 250 man company. Some of their duties included; passing the word to men in the field, computing daily man-hour reports, and running errands for the company commander. Although often criticized by their peers for the soft, inside, office jobs they performed they have yet to find a man who is willing to switch billets with them.

All the projects could not have been possible without the ingenuity and determination of our mighty mechanics who worked constantly on those muddy monsters to "keep the wheels turning."

The mechanics and equipment operators teamed up and together made the equipment company a dynamic and hard working company.



**T. E. Hale**  
LT., CEC, USN  
Commander

**R. G. Schneider**  
LTJG, CEC, USN  
Assistant Company Commander  
(Administrative)

**L. J. Allemand**  
CWO-2, CEC, USN  
Assistant Company Commander  
(Operational)





Office Personnel



Michael E. Neumann,  
CN



Roy D. Puckett, EO 1



Leon C. Hirst



R. H. Thomas, CN  
D. O. Fruits, EON 3



Bobby Dehart, CA  
Robert T. Giese EOH 3

Dispatcher



James A. Fournier,  
EOH 3  
William J. Clough,  
EOH 3



Heavy Equipment  
Pool Supervisor,  
"Smiling Red"

Cecil R. Johnson, EO 1  
Allan McFarlane, EOH 2



G. T. Ross, EO 1

L. D. Boston, EO 1



Transportation  
pool supervisor







Francis Freeman, CM 1



Harry Kelly, CMA 2



Robert Moore, CMA 2



Roy Thomas, CMACN



Ernest E. Grizzle, MR 1



Gary Purdue, MR 2



David Brandt, FN



Michael Hungate, MRFN



Glen K. Robinson,  
CMA 3



"Some more red tape"



"Operator, give me the air conditioning service"



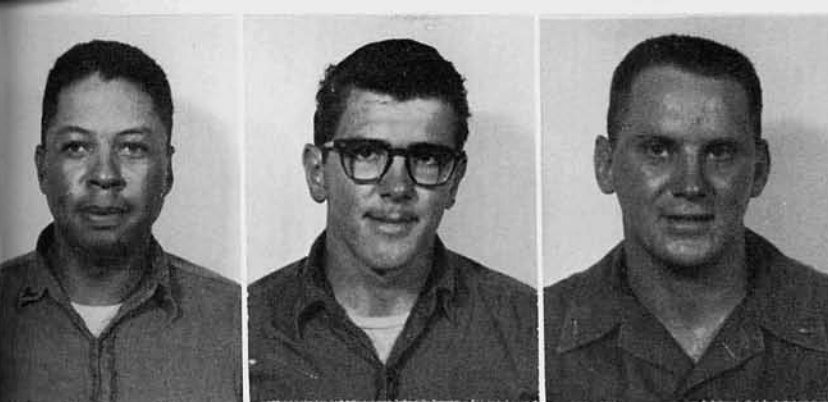
Chief L. A. Bailey, CMC  
Gas Shop Supervisor



Chief B. S. Morris, CMC  
Heavy Shop Supervisor



"Meet me on the corner of Fleet Street and Black Shoe Blvd"



Marvis J. Cameron,  
EON 2

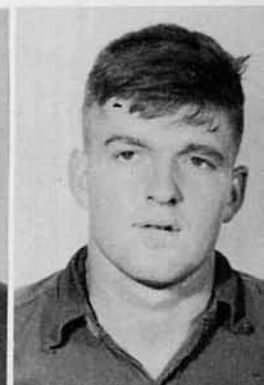
Kenneth S. Ladina,  
EOHCN

Lloyd C. Bell, EON 3

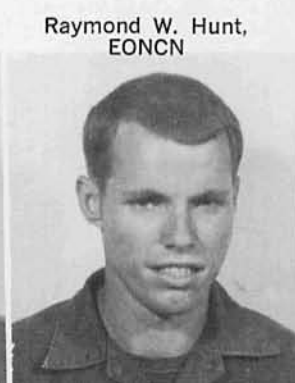


# OUR BIG JOB

Arthur Owen, EON 2  
Richard Reeves, EONCN  
Bobby L. Gibson, EONCN  
Edward A. Guy, EOH 3



George J. Morgan, EON 3  
Climmon T. Burnette, EO 1  
Phillip P. Zimmerman, EON 3  
Mike Mazuca, EONCN



Rick Farrell, EON 2

Raymond W. Hunt,  
EONCN

Francis Cheschi, EON 3





Neal W. Bicknese, EO 1



Chief Capps



James C. Peterson,  
EO 1



Ed Malecek, CMH 3



John L. Connelly,  
EON 3



Bradford Kallerson,  
EON 3



James Lemon, EO 1

Howard P. Boehme,  
EOH 3

Daniel M. Henne,

Donald Hasbrouck, C

R. M. Blount, C

William R. Snyder, CN

R. V. Priest, EON 2



Howard E. Stephens, CN



Douglas Church, EON 3

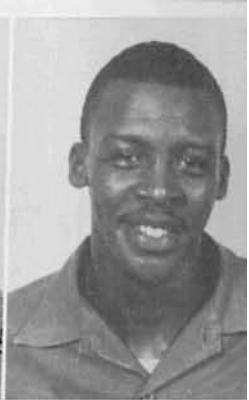


D. M. Husby, EON 3



The Giant's caretaker





Swaze Armstrong, Jr.,  
EO 1

Joe A. Blackwood,  
EON 3

Bruce L. Van Wagner,  
EO 1

William E. Raily, EOH 2

C. W. Fortner, EOH 2

A. Hargrove, EOH 2



Leo H. Humphrey, Jr.,  
CN

Robert D. Fisher, EON 3

Terry D. Clark, CA

Charles Polacek, EON 3

Rodney C. Boss, CN

Arthur Judd, Jr.,  
EOH 2



David E. Wagner,  
EON 3

Donald Hair, CN

Joseph Cotton, EOH 3

T. K. Barry, EOH 3

Keith W. Brown, EOH 3

David E. Hulfachor,  
EON 3







Filling holes on route #1



G. E. Johnson, EOH CN  
George R. Sims, EOH 3



Don Connell, EOC

Jerry W. Stanfill, EOH 3

Smoothing it out



Road repair can be back breaking.



John R. Boliek, EOH 3  
James H. Bryant, EOH 2  
Jimmy A. Austin, EOH 3



Gary R. Welch, CN

Stephen E. Pack, EOH 3



John R. Hunt, EONCN

G. M. Hoffman, EOH 3



Henry N. Hopkins,  
EOHCN

Jackie L. Fisher, ADR 3



Philip Bondie, EOH 3

Lloyd B. O'Brien, EO





Duane A. Carlson, EO 1

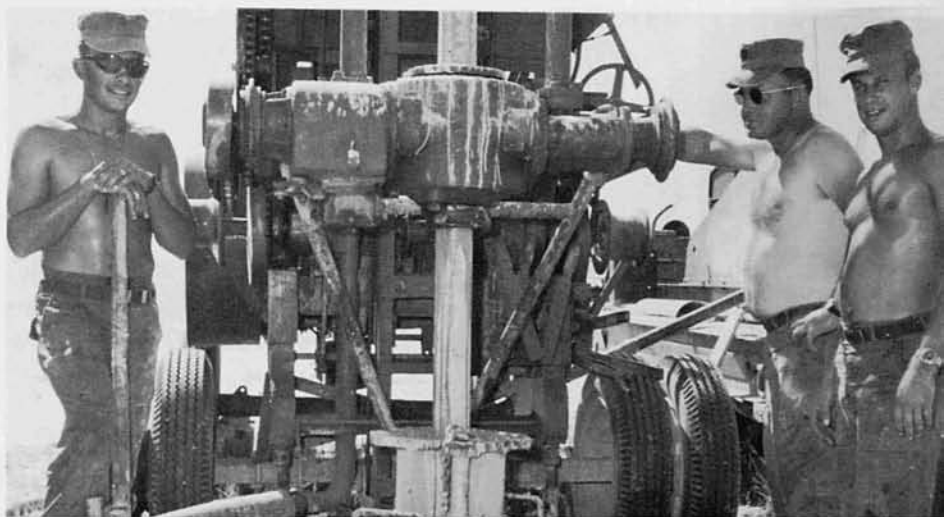


J. D. Winburn, EON 3

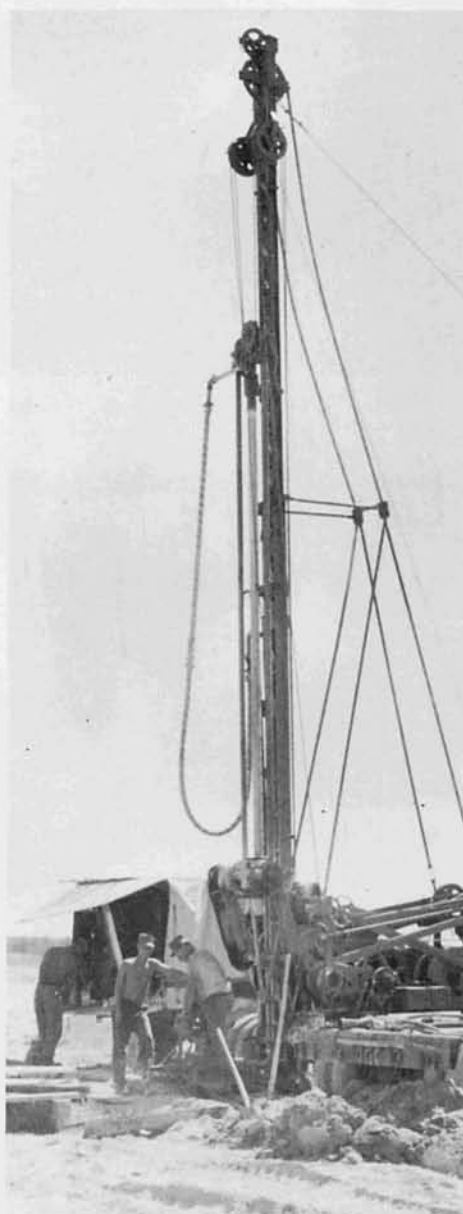


Keith B. Williams, EO 1

Pulling surface casing



Drilling crew



Well drilling rig

Michael W. Prosser  
EON 3



Charles E. Haray, Jr.,  
EONCN







David L. Owens, EOH 3



Jimmie Beard, EO 1



Ward A. Rollis, EOH 3



Robert J. Ament, EON 3



Michael J. Lemly, CA



James B. Lee, CN



A. F. Pennington, EOH 3



Amon F. Moore, EOH 3



W. G. Kirchner, EOH 2



A. H. Altrock, EON



Ronald A. Carter, EOH 3



Angelo M. Juliano, CN



Ken Clolinger, EOH 2



James M. Drinkwater,  
EOH 3



Neil Bowman, CN



R. L. Baylis, EOH 3



Robert Matthews,  
EOHCN



L. L. Howard, CA



James Locke, EONCN



B. T. Thompson, EOH 3



Fritz Winter, EO



Lee Rennicks, EO 1

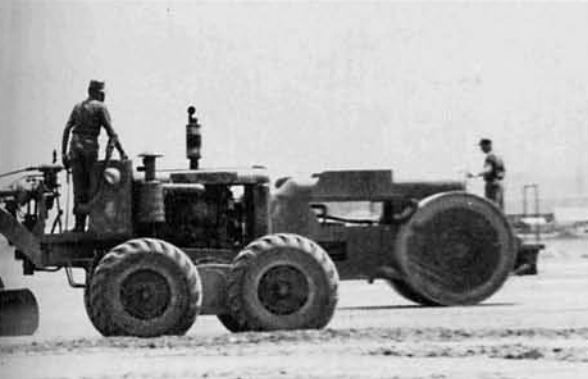
James Wright, EON 2

Robert B. Reddick,  
EON 3



Nothing like being on your feet all da

Grading off the VMO.



John H. Swenson,  
EON 3

Jerald L. Wright, EON 3

H. T. Speed, EON 2



VMO drainage

Riding in those open-face, quick-  
steering monsters



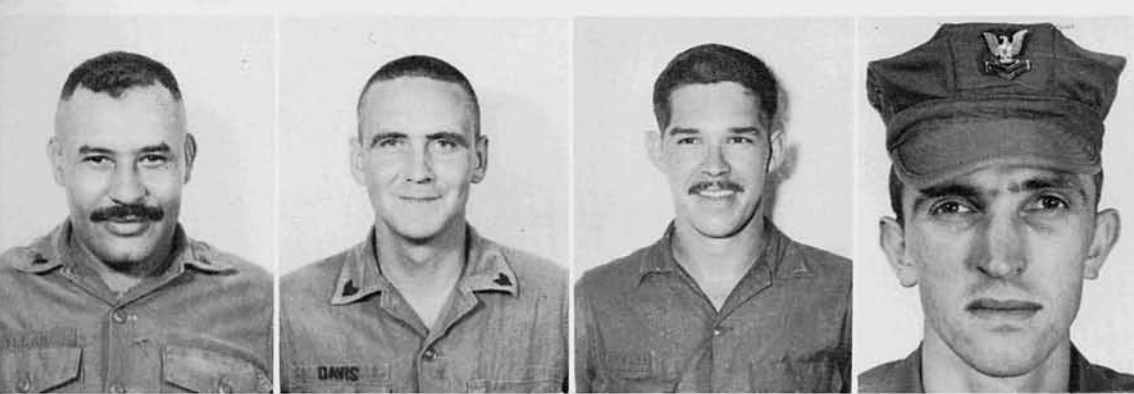
Joseph M. Johnson, CN

Thomas M. Batties, CN

Moses Nelson, EON 2



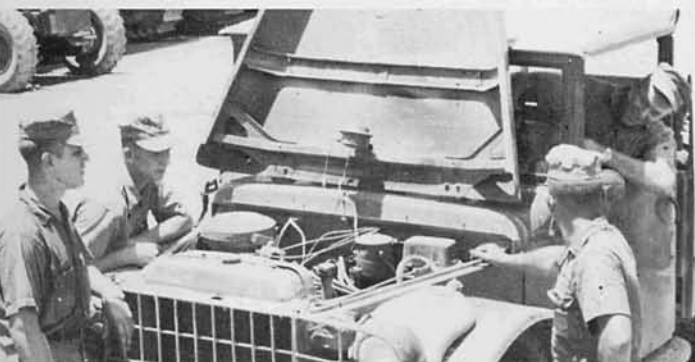




Pablo Illas, CMA 2  
Ira Davis, CM 1  
G. F. Neild, CMA 3  
Eugene L. Holoun,  
CMH 3



Head Mechanic, CMCS  
Williams



"See, I told you a bigger hammer would do it"



Talk about a "tiresome"  
job.



Frederic Fuchs, CMH 3



Mitch Wolf, CMH 3



Johnny Johnson, CMH 3



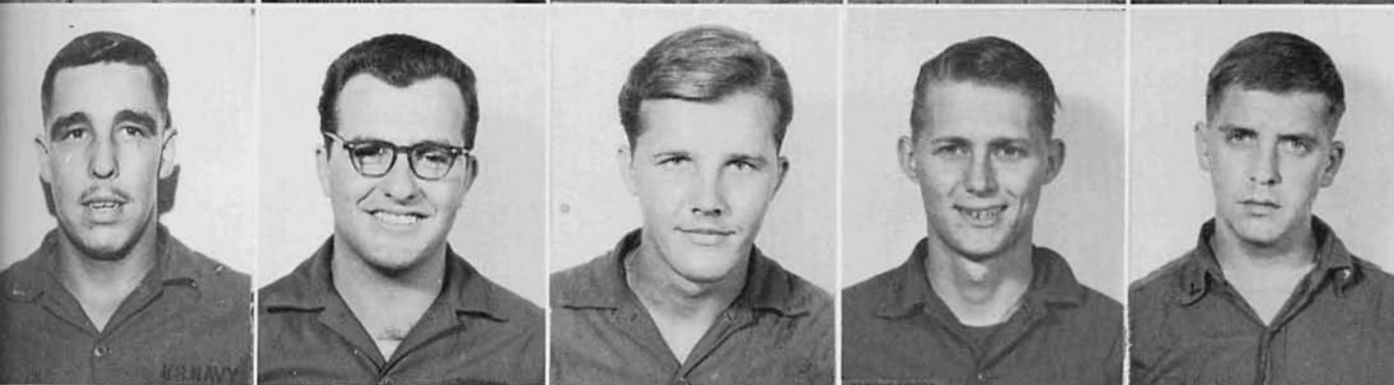
Raymond Bost, EOH 3



Franklin Brown, CMACN



A Bravo Company team assisting "A" Company with  
welding problems.



#### First Row

Daniel H. Jackson, CMH 2  
William Kvarnstrom, CM 1  
Gerald Brookshire, CM 1  
William Hood, CMA 3  
C. W. Palmer, CMA 3

#### Second Row

Charles Gatlin, CMA 3  
Patrick Voelkel, CMA 3  
Kenneth Nickels, CMA 3  
Jimmie L. Ketchum, CN  
Frank McNutt, CMA 3

#### Third Row

D. L. Valenzuela, CMA 3  
Danny Ironmonger, CN  
Elbert L. Sullivan, CMA 3  
Jim Campbell, CMH 3  
Bobby Joe Fisher, CMA 2

#### Fourth Row

Bill Gray, CMA 3  
R. B. Johnson, CMA 3  
Gary W. Carter, CMA 3  
H. E. E. Dopler, CM 1

#### Fifth Row

Robert Mitchell, CMA 3  
Francis Risley, CMH 3  
Dean Bellmer, CMA 2  
Guy Hopkins, CMA 3

#### Sixth Row

Hiram Davis, CMA 3  
Kennard Miller, SWFCN  
Wiley Johnson, CMA 3  
Dennis Ohmer, CMH 3





Gerald Koenen, CM 2  
Curtis Speak, CMH 2  
Bryan Abraham, CM 2  
Louis Atkinson, CMH 2  
Harold Sherrill, CMA 3



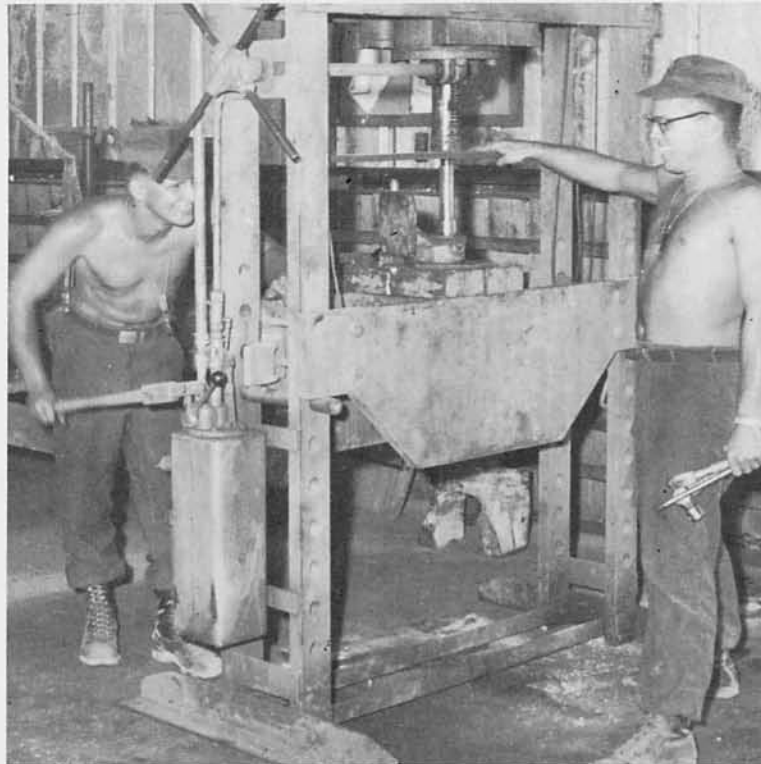
"Tiny" Koenen's Heavy Shop crew



Only the parts are bigger



Gordon Milatz, CMA 2  
Norman Fitzpatrick, CMH 3  
Richard Baugh, CMH 3  
Richard Harvey, CMHCN  
Thomas Margetich, CMH 3



Some parts just don't cooperate



A couple of "idlers"



Thomas Buckley, CMH 3



Charles Magness, CMA 3  
Edward Mewbourn, CMA 3  
William Degen, CMA 3  
Donald Whirlow, CMH 3  
Gerald Hill, CMH 3

Clifton Vantine, CMH 2  
John Desch, CMH 3  
Garry Price, CMH 3  
Thomas Knoerl, CMA 2  
Karl L. Reiser, CMA 3



# NIGHT PM CREW



William W. Allison, CM 1  
Night Shop Supervisor



Kenneth Jackson, CM 1  
Ass't. Night  
Shop Supervisor



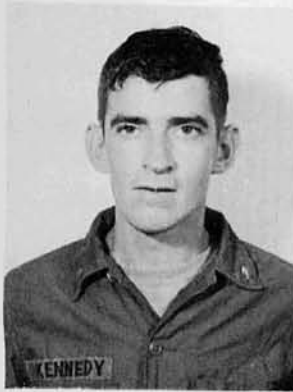
Charles J. Stanley,  
CMH 2



Alberto Martinez, CMA 2



Tommy Wagner, CMH 2



Jimmy Kennedy, CMA 2



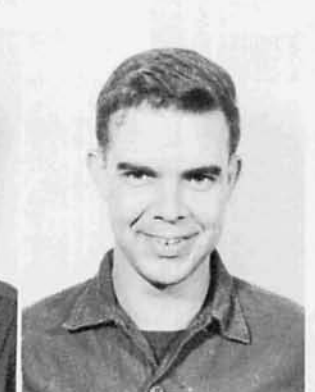
James Tadlock, CMH 2



James Barrett, CMA 3



William Seale, CMA 2



John Brian, CMH 3



Warren Garrison, CMH 3



Harry Langheim,  
CMACN



Bill Pierce, CMACN



Robert M. Ward, CMA 3



Michael Anthony,  
CMHCN



Gerald Corrigan,  
CMHCN



Michael Wood, CMHCN



William Roll, CMA 3



William Pugh, CMA 3



Fred Maynard, CMHCN



Fred B. Reynolds,  
CMHCN



A. N. Price, CMHCN



James Yoder, CMHCN



Danny Berry, CMA 3



John Beecher, CN



Arthur O'Bryant, CMA 3



Zack W. Rainwater,  
CMA 3



Walt Barr, CMHCN



H. W. Crossett III,  
CMACN



The night PM crew can take pride in the knowledge that throughout the deployment, the deadline constantly declined. This was due in large part to their constant attention and efforts toward proper lubrication, and minor adjustments and repairs. After trying to sleep during the day in a hootch where temperatures reached 110 degrees in a noisy, dusty camp area, this crew was always on the job and turned out top quality work.



## LATERITE PIT

The laterite pit operation, moving 5,000 cy's per day, kept all hands "turning and burning."







Laterite Pit Crew



John D. Minor, EON 3



Alonzo Shade, EON 2

Billy G. McCormick,  
EON 3



Ronald Van Sick  
EON 3



Butler Pad Crew



Alan Tarpley, CN

Jimmy L Whitaker,  
EOH 2



"You won't make it to Gulfport that way, men."





Over the road crew — they kept the supplies moving.

D. E. Rouse, EOH 2



Allen Goodwin, EON 3



Louis W. Jackson,  
EOH 2



Gary Winningham,  
EONCN

Charles Kandare, EO 1



H. Rambo, Jr., EON 2



THESE ALPHA COMPANY MEN PROVIDED  
SUPPORT TO THE BATTALION IN OTHER  
AREAS.

Taking a break



# BRAVO COMPANY



William L. Wood  
LCDR, USN  
Commander



LTJG Tomas M. Kelty  
Ass't Company Commander



UTCS Howard D. Dugger  
Chief Petty Officer



UTC Lawrence

UTC Hornkohl



Carmillis Hall, UT 1

W. M. Brown, UTB 2



Johnny H. Quattlebaum, UTP 2  
Lemuel Heflin, UTP 3  
Dennis Brun, UTA 3  
Paul A. Weed, UTP 3



Robert Phillips, UTP 3  
Frank J. Csordos, UTA 2  
Bill Fienga, UTP 3  
Alfred Merriam, UTP 3



## HUE INTERROGATION



One of the large projects Bravo Company UT's completed for the ARVN's was the Hue Interrogation Center. The six man crew spent four months installing fixtures including: Thirty water closets, twenty two lavatories, kitchen facilities, and drains.

The Shop's crew did the camp maintenance and tended the boilers for the laundry that meant clean clothes twice weekly for the eight hundred men of the Battalion. And when our neighbors, the 131st Aviation decided to improve their galley, it was the Shop's crew that installed their boiler system to provide hot

## SHOPS AND PLUMBING





B. J. and crew working on the Helo Pad, which was completed in five days. There were forty men working two shifts.



UTI Ouellet and crew working on drain line from one of the new galleys.

Donald Wiersch, UTP 3

Melvin Michaels, UTP 2

Glenn R. Bjorndahl, UT 1

Farrell Loftis, UTP 2

Dan Hammond, UTP 3

Don MacIntosh, UTP



Eddie E. Yancey, UTP 3

The largest single assignment given to the UT's was the Phu Bai Water System. Built to supply the entire Phu Bai complex, we laid over 24,500 ft. of four inch, six inch, and eight inch pipe. While one crew finished the pipe line, the other crew started the water purifying and pumping station. Taking raw water from the Song Phu, converting it to fresh water at the rate of two hundred gallons per minute and storing the sweet water in a storage reservoir were the aims of this project to supply the fifteen square miles of camp area.

In addition to this six month long project, these crews did the utility work on six galleys, ten showers, and helped the Steelworkers complete their rush projects—the Helo Pad and Butler Buildings.



Cecil Ruiz, UTP 3



Wayne Temple, CN



B. H. Stone, UTWCN



Gene Seidl, UTPCN



Gary M. Brooks, UTPCN



Gary Smith, CN



Harold Hart, UTW

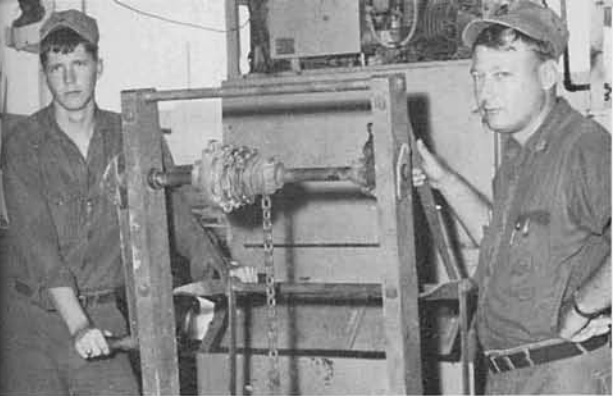
One of the major parts of the Phu Bai Water System is the water storage tank.



An eight inch pipeline, buried three feet, floated to the surface during Monsoon season.







Davis and Allen pull another hundred pound block of ice.



Replacing old pipe with new at the Camp Cambell Water Plant.

Gary Atnip, UTA 2

Lonnie C. Davis, UT 1

Bob Gourde, UTP 2

Dan W Smith, UTP 3

Milton T. Davis, UTW 3

George A. Race, UT



Donald R. Scott, UTA 3

The Water Plant crews worked twenty-four hours a day to provide the fresh water for drinking, cooking, and cleaning in camp. And at night, that first cool drink after the sun went down was chilled by the ice produced that day in the Ice Plant. The Water Plant produced four hundred and fifty gallons per hour, when MCB 62 arrived, but with the renovation of the piping system and the addition of a second Erdulator in March, the Water Plant was capable of eleven hundred gallons an hour. That's almost four million gallons of water during the deployment.

And when the Ice Plant received their share of the water, they produced almost three tons of ice a day until mid-January, when a compressor break-down forced a curtailment of the ice schedule. Working twenty hours a day on repairs for a week, the crew managed to bring the total output back up to a ton of ice per day. All told, the Ice Plant issued more than two hundred and fifty tons of ice.

Larry Wheeler, UTWCN



Lawrence Bernard, UTW 3



P. T. Allen, UTP 3



Robert C. Campo, UTPCN



R. Michael Day, UTW 3



M. J. Prieur, UTPCN



Harry Stello, UTW 3

Installing the new Pumps for the Phu Bai Water System.



Ice Plant crew gathers around the hundred pound popsicle for the Hue Orphanage.





Chief Manning directs line crew on Phu Bai power project



Charles R. Graves, CE 1



R. E. Leu, CEP 2



R. E. Stotts, CEP



R. E. Dunn, CET 2



Lewis Stegall, CEP 3



K. J. Erickson, CE



John Sawyer, CEW 3  
Gary W. Martin, CEW 2  
A. T. Davis, CEW 3



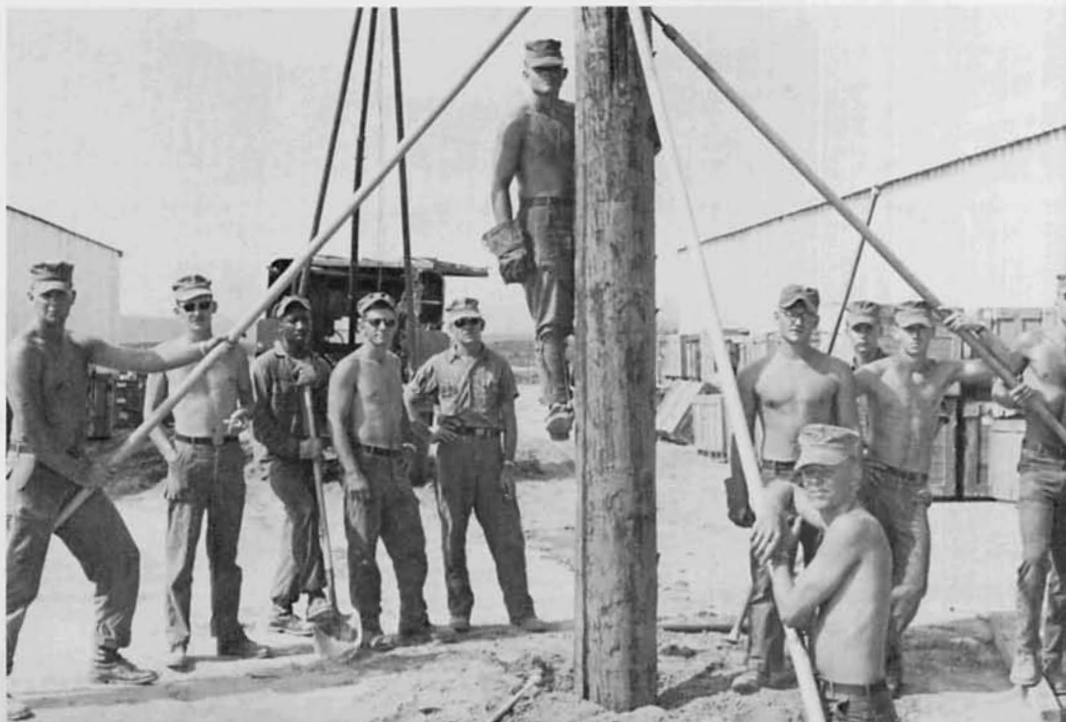
William D. Horne, CEP 3



Donald Milligan, CEP CN



John R. Enfinger, CE





Robert M. George, CE 1



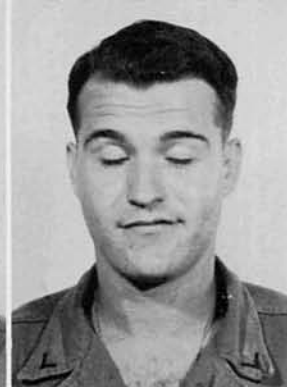
W. Moody, CE 1



Francis P. Cannizzo,  
CEP 3



Wayne T. Brooks, CEP 3



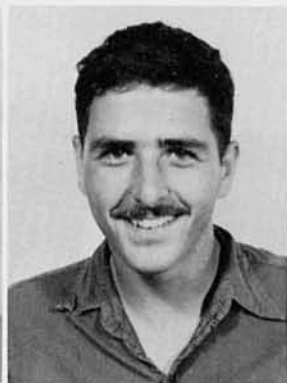
Robert Plaud, CEP 3



Mell R. Moore, CEW



Robert Johnson, CEW 3



Bruce J. Romano,  
CEW 3



Larry E. Jennings,  
CET 3



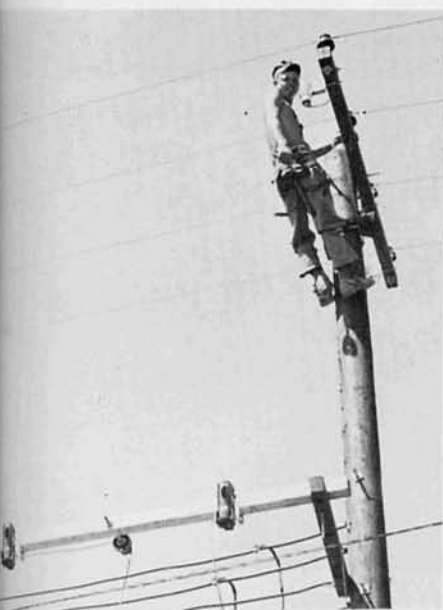
Gary Luck, CEP 2



Melvin L. Owen, CEW 2



Thomas J. McKay,  
CEW 3



CEP2 Luck puts finishing touches on Transformer Bank



James W. Medley, CN

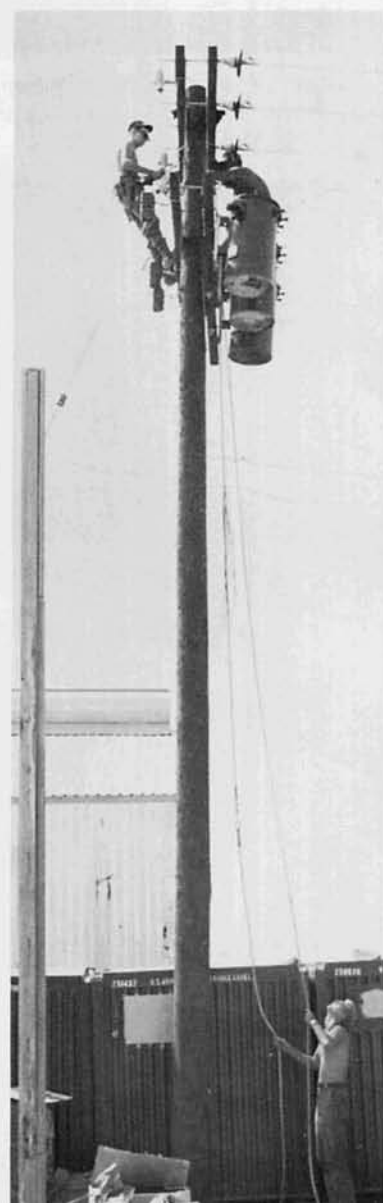


Richard B. Whitman, CN



Setting motor controllers on well pump

"Up, Up and Away"







Chief Galey heads up  
electricians of Base Maintenance



Interior wiring crew



Cloyce Pillow, CE 1



J. E. Ferguson, CES 2



Bill York, CES 3



Paul C. Bree, CES 3



Dennis G. Atkinson,  
CEP 3



Stephen E. Horna  
CEW 2



Elvin L. Sisler, CEW 3



Barry Roberts, CEW 3



F. H. Johnson, CEW 2



James Wilson, CN



Leo Paskov, CEW 3



Kenneth Greer, CEW



John R. Carr, CES 3



Howard A. Muse, CET 3

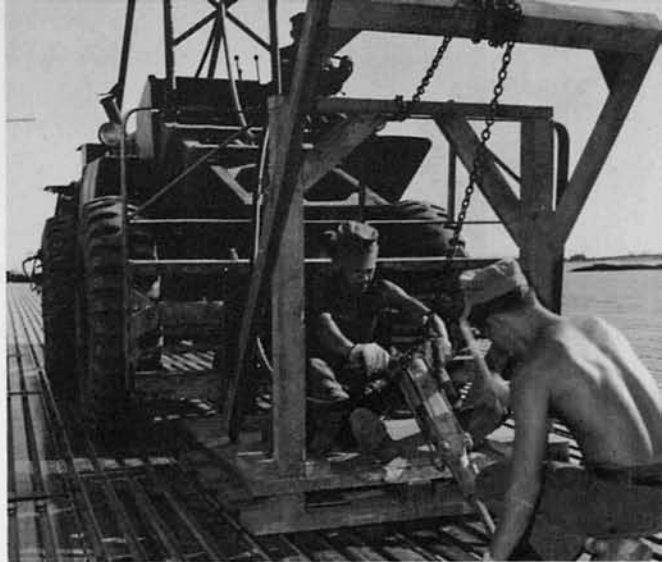


Power Plant operators



Laying the matting for 6 acre Helicopter Parking Apron

# SW'S



Driving home locking pins



James M. Capps, SW 1



Theodore E. Darling, SWE 2



BRAVO COMPANY Steelworkers contributed to the completion of twenty seven Butler Buildings, and the laying of a six acre tract of T-17 matting for a helicopter parking apron. Three helicopter hangars were also completed.

The SW Shop crew completed the duct work for the Dial Central Office from sheets of cold rolled steel. Twenty cell doors were built for the Hue Interrogation Center. In addition to these larger projects the Shop's crew was kept busy repairing radiators for Alfa Company equipment, fabricating pipe for the UT's, repairing mine sweepers for the Marines and ARVN'S, and drive tracks for the ONTOS.

In all, the Steelworker Shop and Field crews left behind in Phu Bai more than enough finished steel construction to show that a real Battalion had been there.



Larry H. Davis, SWE 2  
James A. Oakes, SWE 3  
Rex Thurston, SFMSN  
Michael Wieland, SWE 3

James R. Morrison, SWE 2  
James L. Wright, SWF 3  
Jeffery T. Mabe, SWF 3  
Donadl J. Latiolas, CA



Michael O. Brogan, BUR 3

Michael R. Dougherty, BUL 3

Robert S. Prescott, BUL 3

Craig DeLaughter, BUHCN



Aaron J. Bridwell,  
SWF 3  
Grante L. Kramer,  
SWF 3  
Francis E. Larrabee,  
SWF 3



Carl Smith, SWF 3  
Clifford B. Guyette,  
SWF 3  
Robert G. Arnold,  
SWF 3



Jerry R. McGee, SWF 2



Ronald L. Eldridge,  
SWF 3



Billy W. Gilbert, SWF 3



William L. Murray,  
SWF 3



Raymond J. Wortel,  
SWF 3



**SW's**







"Skull" Umble, SFC

# BUILDERS



Stephen Toris, BU 1

Robert D. Stang, BUL 2

Philip B. Goodnight, BUL 2

Bravo Company Builders were constantly at work in the Camp Cambell area, making needed repairs to living quarters and other buildings. In addition to repairs, the Bravo BU's completed the mortar alert tower in the center of camp, an addition to the Supply building, a new office building for the Company, and the lowering of a number of huts in the Camp. The BU's can take credit for a new mahogany bar with the hand carved insignias of the eight Seabee ratings for the new EM Club.

But the Builders work was not confined to the Camp Area. Trestles for the pipe of the Phu Bai Water System were constructed, and a filtering unit in one of the forty-four thousand gallon tanks were built by the BU's. A twenty foot high trestle was built at the Helo Pad to load water trucks. Towers for water tanks and fuel tanks were also erected.

They made the Marines happy by building Mess Hall tables for three galleys and work tables for a number of the shops and supply buildings as well as pews and an altar to complete a chapel.



Robert A. Safrit, BUL 3

Gary Stineman, BUL 3

Gary D. White, BULCN

Jimmy L. Ray, BULCN

Ronald D. Singer, BULCN



# THE REACTION PLATOON



The Reaction Platoon was comprised of two squads of Construction Electricians, one squad of Utilitiesmen, and one squad of Steelworkers and Builders. The Platoon's function was to form a blocking force to any ground attack mounted by the V. C. in the Camp Cambell area. Highly mobile, they were to react to a given signal, immediately muster and be ready to go anywhere in the Camp area.

One night in March, about 2100, there was a report that a V.C. suspect had snuck through the Security lines and was roaming through the rice paddies. The Security personnel could not leave their lines or fire toward the Camp huts, so the Reaction Platoon was called out. Mustered at one hundred percent strength, and ready to go in three minutes from the time the alert signal was given, the Platoon moved out. Despite an extensive sweep of the paddy, no sign of the suspect was uncovered, but the Platoon had shown its effectiveness, and its necessity.

# AND THE RAINS CAME







LCDR Shackelford, Commander



LTJG Carter

BUCS Sawyer



## CHARLIE COMPANY

Almost as soon as the first men of "C" Company arrived in Vietnam, the 2nd Platoon departed for Dong Ha to make repairs on the airstrip, complete the housing for ARVN dependents and commence building the parking apron at the airfield.

It was a rainy January. Material was scarce, but not water and mud. In the unceasing downpour, Charlie company headed south into badguy land as much as twenty miles to erect eighteen strongback huts in six CAC villages, stretching from Phu Loc to Phu Bai. Then there were bridges to repair—three of them. We were now engaged in general camp improvements—building additions to sick bay, rebuilding bunkers and repairs and improvements to the CP. Plastic sheets were rigged on the sides of all the huts in an attempt to keep out the bitterly cold winds and rain and an altar was added to the Chapel. The 155mm artillery battery needed a galley, as did 3rd Motors and "A" Med.

With the help of Alpha Company, we started a "Mud Pie" in Hue—the Interrogation Center, located inside the walls of the old city. Materials began arriving for the job, so a five-man detail set up housekeeping, but the mud was still there and production could not be started. Back in Phu Bai, the prefab yard was going strong—putting out strongbacks at an alarming rate—with crews erecting them in and around the Phu Bai Base and the new Gia Le Combat Base, located at our quarry site, 5 miles outside the main enclave. With the help of Alpha Company we placed over 80,000 bags of soil cement for the VMO Parking Apron.

Charlie Company also got into the building of the large metal Butler buildings, 12 of the 37 buildings, doing concrete work and finishing the interiors. Our office was moved into the business district of Camp Campbell and we installed the board walks throughout the Camp.



BUC Deberry



BUC Acheson



BUC Monsrud



BUC Copeland



Pre-fab mascot



Pre-fab yard



**1st Row**

Terry W. Albertson, BURCN  
Allen Blide, BUH 3

**2nd Row**

Kerry D. Brewer, CN  
Roger H. Davis, BUL 3  
Nicholas E. D'Aquila, BUL 2

**3rd Row**

Robert G. Eifert, BUL 3  
George J. Curtin, BULCN  
Robert H. Glenzer, BUL 3

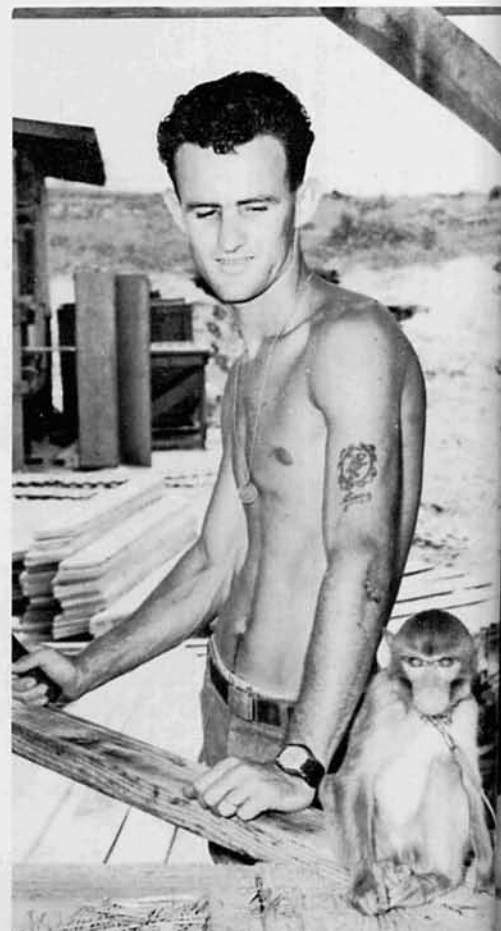
**4th Row**

James C. Hall, BUHCN  
Duane L. Harrietha, BUL 2  
Charles E. Hoffmann, BUL 3



Pre-fab Box Company of Phu Bai

The helping hand







Building a CAC Village



Repair crew for VMO Parking Apron



#### 1st Row

Lawrence W. Jarrach, CN  
Richard R. Klaus, SWFCN  
Ernest G. Lail, BUR 3

#### 2nd Row

William L. Martin, BUHCN  
John P. Matson, BUHCA  
Ed McCloud, BUH 3

#### 3rd Row

James H. Ogle, BUR 3  
Douglas W. O'Hauer, BUL 3  
Stacy F. Parker, BUR 3

#### 4th Row

Charles L. Stewart, CN  
Bill Stone, BULC  
Gary A. Weir, BUH 3

Concrete for Hue



Zilba Bacus, CN  
Ronald J. Barwick, BULCA  
John D. Bracaliello, BUL 3  
Billy J. Brice, BUL 3



Hue Interrogation Center crew



Charles D. Candler, BUR 3  
Eugene Caspers, BUR 2  
Ralph E. Cowan, BUHCN  
William J. Dacey, BUL 3



George V. Elliott, BUL 3



Thomas Eudy, BUR 3



Jerry L. Garard, BUHCN



Jerry Haas, CA



Leslie Harris, BUL 3



Ronald E. Henderson  
BUL 2



Doors to order for Hue

Setting the saw to cut catwalks



Bill Haney, SN

Robert F. Krauss, BU 1

Bob Kurczynski, BUR 3

Kenneth R. Laetsch, CN

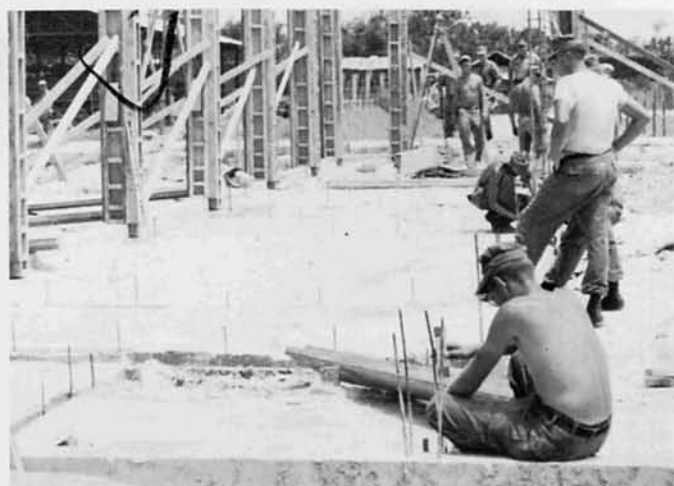
Denis LaRoche, BURCN

Loren Lohrbach, CN



Placing foundation—Hue Interrogation Center

Forms for columns in Hue







The door builders

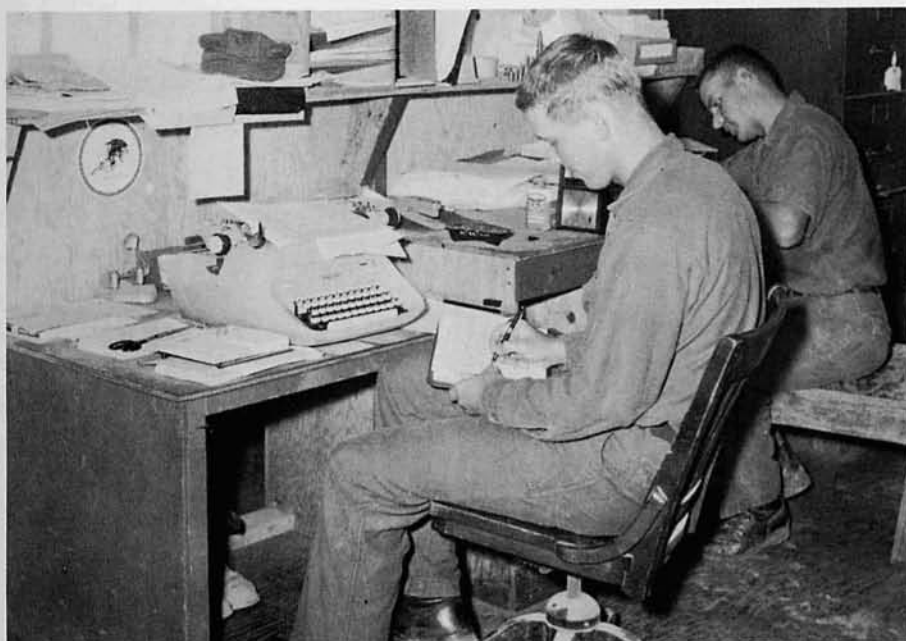


Buice's door shop

Elmer C. Salling, BUL 2



Jerry L. Masey, BUL 2



Company clerk at work

James L. Patterson,  
BUL 3



Rodney J. Studer, CN

A man of few words



Setting the saw for Dial Central



Richard W. Whitake  
BULCN



Stanley E. Poziemski,  
BUL 3



Ron Rozanski, BULCN



Bob Slick, BUR 3



Robert W. Maines, CN



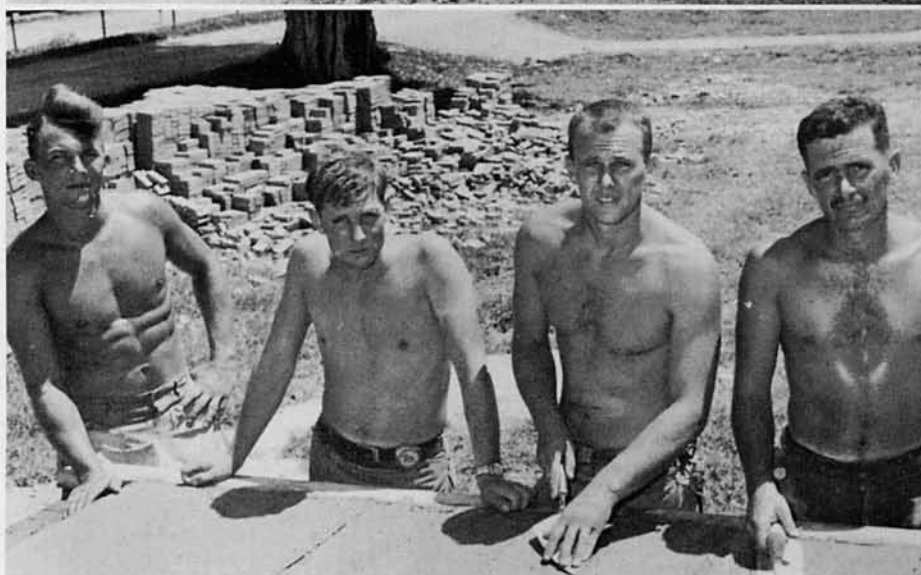
Victor Sultana, CN



Tying rebar at Hue Interroga-  
tion Center



CAC village crew



Concrete loader crew



Part of Interrogation Center  
crew



Hot, dirty work



Material expeditors



Bridge re-decking

#### 1st Row

A. L. Adams, Jr., BUHCN  
Robert Albright, BUL 3  
A. N. Alexander, SN

#### 2nd Row

A. R. Andersen, BUR 3  
J. C. Ashley, BUL 2  
D. L. Barnes, BUL 3

#### 3rd Row

R. N. Beauchene, BULCN  
E. C. Bruhn, CN  
R. W. Campbell, BUR 3

#### 4th Row

A. B. Campa, CN  
Dusty S. Caron, BUL 3  
Houston G. Cribbs, BUH 2







R. P. Haley, BUL 2



R. A. Sacramone,  
BUH 3



R. H. Rogers, CN



Tom Nunn, CN



M. E. Lappert, BUL 3



Water tower crew



Going up!

"In the beginning . . ."



The start of something good



D. L. Kemp, BUL 3

J. A. Magouirk, BUR 3

Nathan Marple, BUL 3

Fred K. McGee, BUHCN

Mike Newport, BUHC





Steelworkers



C. B. Streeter, SWE 2  
N. M. Walker, SWFCN  
Glenn Williams, CN  
H. J. Ringelberg, SWF 3  
Doyle Rule, SWE 3

Stephen G. Brown, SWE 3  
Olaf Tonnessen, SWE 3  
Richard A. Fall, SWF 2  
Henry L. Berna, SWF 3  
Clint Morphies, SWF 3

Our Company Commander pitches in

D. R. Vance, BUH 3

Richard J. Micucci, CN

Ron F. Schauer, SWF 3

Donald R. Korrell,  
SWF 3





Stanley Sanford, CN



Billy Frazier, CN



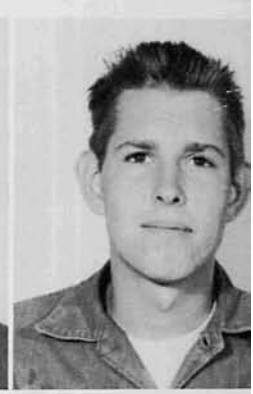
Luke Tomisin, CN



Jonathan Grohs,  
BURCN



Richard Hodges,  
BURCN



Patrick Lyons, CN



Soil cement tower—8 men, 5000 bags per day



Down in Charlie land



"Would you believe—a cement spreader?"

Our safety minded leaders







**Clifford G. Street**  
Lieutenant, CEC, USN  
Commander

## DELTA COMPANY

The men of Delta Company, commanded by Lieutenant Cliff Street, were instrumental in providing a wide range of vertical construction within the Phu Bai Combat Base and surrounding environs during the deployment.

Among the more interesting projects accomplished by "D" Company were: A 500-man galley constructed for the 131st Aviation Company; a 400-man galley built for the 4/12 Marines of the Third Marine Division; a concrete-post-and-barbed-wire security fence erected at the Hue Ramp; construction of seven mortar observation towers, varying from 35' to 50' high, located at various strategic points along the Combat Base perimeter; and placing and finishing concrete for the slab foundations of 35 — 40' x 96' Rigid Frame (Butler) buildings.

Additionally, the company's builders constructed approximately 250 — 16' x 32' strongback berthing huts for military units throughout the Combat Base, as well as for Marine CAC Teams both North and South of Phu Bai.

Delta's Batch Plant was responsible for providing nearly 8000 cubic yards of concrete used by this Battalion as well as MCB 3 and other military and civilian units within the Combat Base.

Some of the company's steelworkers assisted Charlie Company in the erection of 6 RF buildings.

MCB 62's own Camp Campbell was made more habitable and enjoyable thanks, in part, to the efforts of Delta Company. Evidence of their work can be seen at the new attractive EM Club, Punji-Pit and the Acey-Deucey Club, the Tape and Band Room, as well as the louvered huts throughout the camp.

One of the most important jobs tackled and completed by the Company was the construction of 21 fighting bunkers plus main and secondary CP bunkers at the Rock Crusher site near Gia Le. The bunkers were required to provide security for Battalion personnel assigned to guard the Rock Crusher. (That was B.M. — Before the Marines.)

Along with all the important production, the Company also supplied its share of the manpower required for the security of our lines as well as at the Gia Le Combat Base. This figure reached as high as 38 at one time.

Credit for providing that necessary ingredient-Leadership-should go to the Company Chief J. W. Paddock, and to the Platoon Commanders, Chiefs J. T. Richmond, C. B. Sizemore, L. W. Glover and G. P. Campbell. And to the men themselves, CONGRATULATIONS FOR A JOB WELL DONE!



Chief L. W. Glover

# THE CHIEFS



Chief J. W. Paddock



Chief G. P. Campbell



Chief C. B. Sizemore



Chief J. T. Richmond



James T. Kiker, BU 1



Donald H. Varney,  
BUL 2



Berthold Bellof, BUL 2



W. T. Sullivan, BUL 2



Standing by for the dedication ceremony of the new 131st Aviation Galley are the Delta Company personnel responsible for its completion.



Ozro T. Mills, BUL 2



Vernon J. Williams,  
BUR 2



James D. Anderson,  
UTWCN



Frederick W. Rowe,  
UTWCN



James M. Mennucci,  
SWF 3

Delta Company Steelworkers take time out from their work on a Quonset Hut to pose for a picture.



James O. Walters,  
SWF 2



Douglas L. Riley, SWE





Harry L. Wise, BUL 3



Dennis Jacoby, CN



MCB-62 Batch Plant in operation



Concrete batched at the plant was used throughout the Combat Base and surrounding areas



Richard H. Oyster, BUHCA



David R. Stark, BUHCN



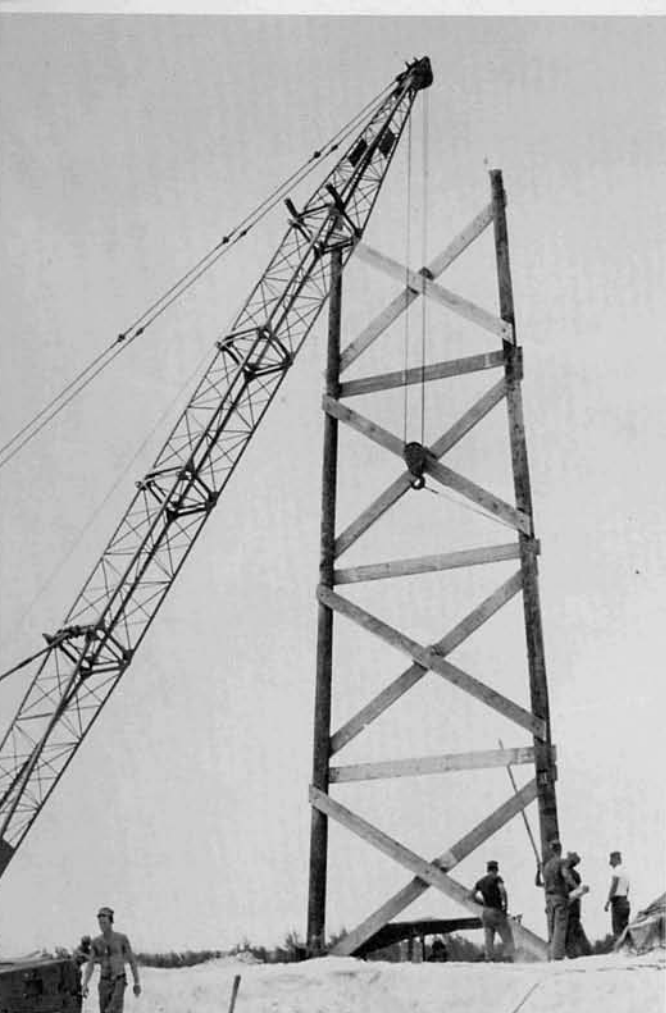
Roger A. Giese, CN

The Batch Plant crew produced nearly 8000 cubic yards of concrete during our deployment.

Roger E. Krause, BUHCN

Gayle W. Struss, BUHCA





Construction on one of the seven mortar observation towers begins.



The mortar towers ranged from 35 to 50 feet high.



Jerry E. Daniel, BUH 2



Kenneth R. Robison,  
BUL 2



William H. Tanne  
BUL 3



Danny E. Hughes,  
EON 3



Allan F. Tiltti, CN



Leo G. Letourneau,  
BUR 3



John D. Elliott, CN



Charles P. O'Hara,  
BUHCN

Towers are used both day and night to pinpoint enemy activity outside the perimeter.





Kenneth M. Brown,  
BUL 3



Garnet S. Bean, BUL 3



Lonnie R. Stockwe  
BUL 2



Reginald A. Hodge, CN



Aaron K. Coulter, CA



Michael Chencharik,

Forms for concrete must be set with an  
instrument.



Gene A. Traves, CA



Chief Campbell and his crew "take five" from their FLSG-A fencing project.

Patrick Marques, CN

Marvin Morgan, CN

Robert P. Nowik, CN

Charles D. Collins, CN

Barry W. Bostwich,  
BUR 3







0700: Delta Company mounts-up for the trip to one of the Marine CAC Villages.



0830: The destination is reached and the material is quickly unloaded to begin work.



0900: Jacks for the CAC Team huts are positioned.



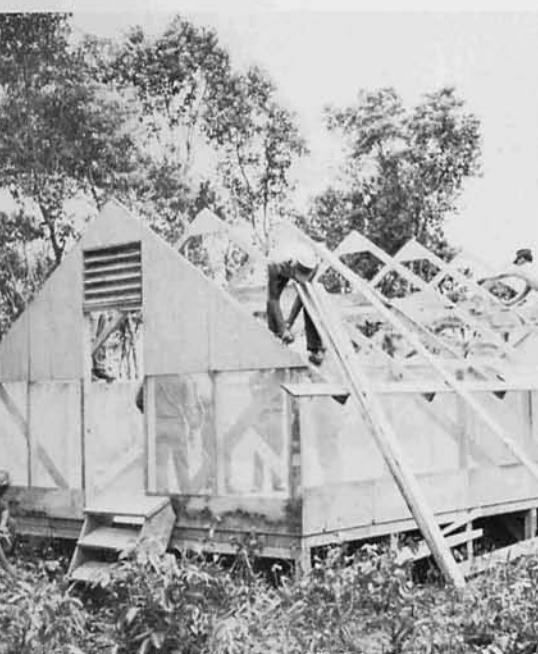
1000: Deck sections are prepared for quick installation.



1100: Soon the rafters go up and it's time for lunch.



1200: Work resumes at a fast pace.



1300: After the purlins are nailed on, it's time for the metal roofing.



1400: The huts near completion as the roof goes on.



1500: Home away from home. Three huts are complete and the Delta Company Seabee team as the Marine CAC Team prepares.



S. Rick Behimer,  
BUL 3



Alan W. Holcomb,  
BUL 3



James Bulloch, CMACN



James L. Jackson,  
CMACN



Joseph B. Cox, BUL 3



Anthony J. Pagliaroli,  
CN



Walter J. Slekis, CN



Robert M. Herbst,  
BUH 3



Larry G. Saulsby,  
BULCN



James G. Vaughan,  
BUHCN



Frank Singleton, CN



Richard A. Pepin,  
BUR 3



Alvin C. Barker, BUL 3



John A. Cappozzi,  
BUL 2



Loren W. Schrieber,  
CN





John K. Gilpin receiving letter of commendation from Commander Richeson for his alertness in warning camp of a mortar attack.



John K. Gilpin, CN



Richard A. Engeland, CN



W. Joe Wilson, CN



Sammy L. Allen, BURCN



Charles T. Dunn, CETCN



Richard Bonilla, CN



Charles R. Davidson, BUL 3



Tracy S. Coleda, BUL 3



Wesley F. Atkins, CET 3



Lester D. Ritthaler, CA



James H. Martin, BUL 3

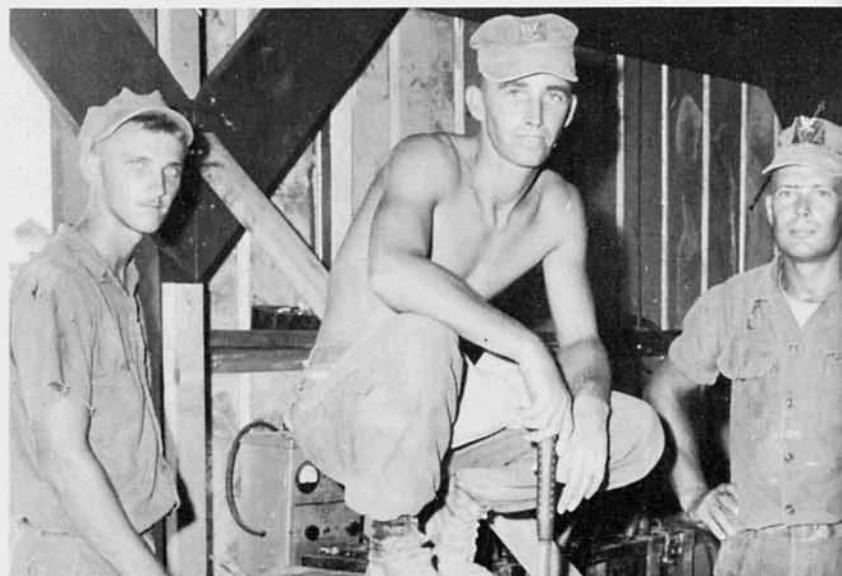
Charles F. Marshall, UTP 3



William J. Rohn, CN



Delta Company personnel were often assigned camp improvement projects, as shown here at the "A" Company shop.







Charles H. Ruff, BU 1  
Edward A. Dinges, BUL 3  
Dennis C. Sweigart, BUHCN  
Kenneth W. Penick, CN



Kirby R. White, EONCN  
Donald H. Balch, BUR 3  
Michael L. Walters, BUHCN  
Homer P. Harrison, BURCN

The 131st Aviation generator shed was one of the many jobs completed by Delta Company.



Michael L. Coots,  
BUR 3

Harlan H. Loveday, CA

Robert E. Jones, BU

Richard A. Pepin,  
BUR 3

Kenneth R. Cassisi, CN

Forest R. Dale, BUL 3



EAD3 ULDIS DALLAS

# SECURITY ELEMENT



J. E. Howard  
LTJG  
Commander

Few Seabee Battalions in Vietnam have had to meet the Security requirements that MCB 62 has. Besides maintaining and defending our portion of the Phu Bai Combat Base perimeter—a job involving about sixty men on the first of February, we were called upon to secure and defend a two mile perimeter around a site for quarrying operations. This involved another seventy men, and although continual VC harassment made the job extremely difficult, we accumulated no casualties and in a few weeks even the Marines and MCB 3 considered the area safe enough to move into. Gia Le Combat Base was developed, thanks to the 'Bees of 62.

Meanwhile, the monsoons had stopped and the routine defense of Phu Bai had been disrupted by mortar attacks and 100% alerts. No "banzai" charges materialized, but snipers began to take full advantage of the quickly growing rice in front of our lines, and on various occasions rifle rounds were dug out of our heavily sandbagged bunkers.

And now, as MCB 121 takes over our lines, we have fully realized the Seabees potential in the dual role, "Construimus, Batuimus—WE BUILD, WE FIGHT."



# PLATOON LEADERS



The Platoon Leaders for Security are, from left to right; GMG1 Arthur Walton, E01 Cecil Johnson, and SW1 Charles Glenn.

## SECURITY ARMORER



GMG2 Charles Crawford

## COMPANY CLERK



BUHCN Stephen Smith





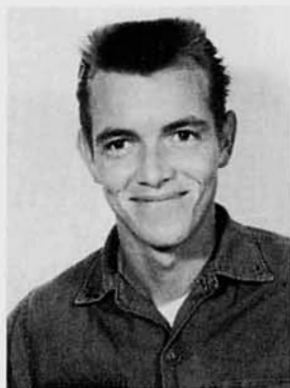
Three-times-a-week rifle inspections insure properly functioning weapons



The long hot walk out to the left flank on Camp Campbell's perimeter.



Herman Rambo, EON 2



Jerry Yarbrough, UTP 3



Bob Hofer, CN



Ronald Long, BUHCN



Daniel J. Bermingham, BUHCN



Steven Calande, CN



Michael J. Lemly, S



Edward Wootton, CEW 3



Robbie W. Fields, UTP 3



Johnny West, CN



An M-60 machine gun and two efficient 'Bees to man it—a deadly combination.



Robert R. Bertrand,  
BULCN



Gary W. Carter, CMA 3



L. C. Long, SWF 3



Guye Daniels, CET 3



Forest R. Dale, BUL 3



Gary Perschau, CN



James A. Hall, BUL 3





On alert for Charlie



Richard A. Meyers, CN  
Stefan K. Lapp, CEW 3



Fred McKinney, BUL 3  
Larry R. Lauterbach,  
BUL 3



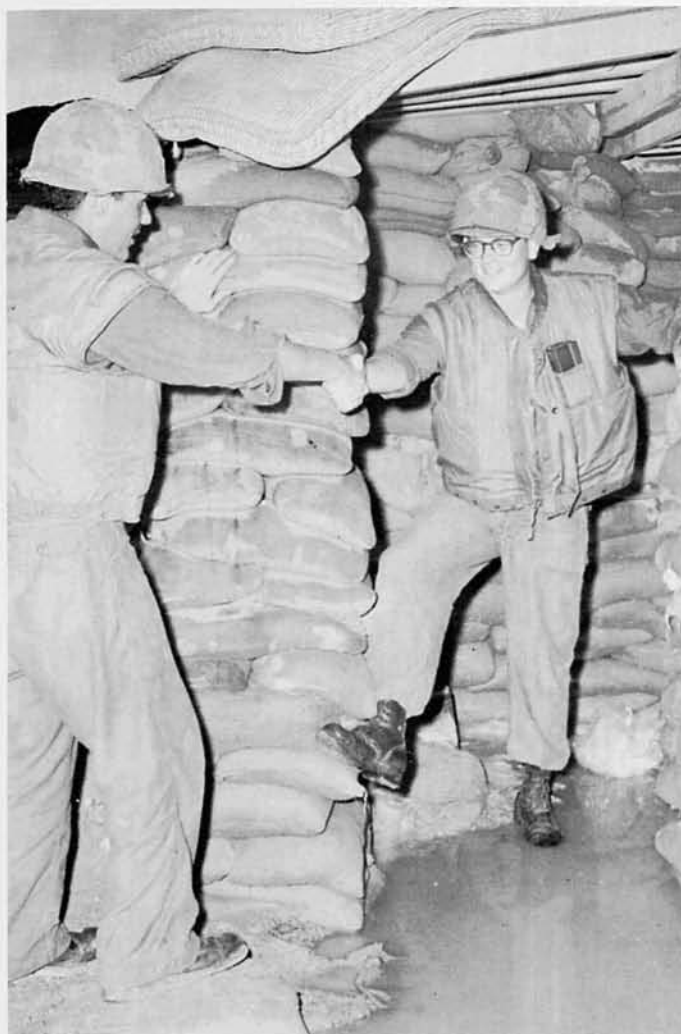
Billie Burchett, CN

Eldridge Crocker

James Hardison, CEW 3

White phosphorous round hits the mark

All at Sea



Not even a Seabee built bunker can with-  
stand the monsoon rains.



"Hello, CP . . ."







Platoon leader directs the fire of two of his M-60 gunners during weapons training.



Thomas Larson, BUL 3



D. E. Robbins, UTA



A Seabee's two best friends—his dog and his machine gun.



Brian Parker, SWE 3



Albert Eymer, CN



Dave Taylor, UTP 3



Larry L. Lowman, SWF 2



Charles E. Ayers, BUR 2



Robert Goodman, CET 3



A few minutes relaxation before going "down" for the night



Charles Kandare, EO 1



Michael H. Yarbrow, CN



William J. Rohn, CN



James M. Broomfield, CA



Edgar Wilson, CET 3

# HEADQUARTERS COMPANY

Without contributing directly to the Battalion's construction efforts, Headquarters Company performs functions without which the Battalion could neither build nor subsist. This is especially true in Vietnam, where the men are fed, clothed, paid and looked after by the personnel of Headquarters Company.

The company is organized into eight Departments, four comprising those Departments headed by the Executive Staff, and four headed by the Special Staff. The Executive Staff consists of the Executive Officer and officers representing four broad functional areas: S-1 (Administration and Personnel); S-2 (Plans & Training); S-3 (Operations); and S-4 (Supply). The Special Staff consists of the officers whose areas of responsibility pertain to Medical, Dental, Chaplain, and Ordnance and Communications.

**J. A. White**  
LT, SC, USNR  
Ass't Commander and  
Disbursing Officer



**C. P. O'Neill**  
LT, CEC, SUN  
Commander and  
Ass't Operations Officer



**EOCS D. L. Ball**  
Leading Chief Petty Officer



Company clerks,  
EAD3 Jim Millar  
and EASCN Mike Brown

# S-1



Albert J. Adelung, PN 2



Tom Egli, YN 1



William Hawryszczuk, Jr., YN 3



Robert L. Heinchon, YN 2



Glenn Hill, PN 3



Ken Jensen, JO 3



Stanley E. Locke, SN



J. R. Matuszewski, PN 2



Norris J. Miller, Jr., PCSN



J. E. Murdock, SN



Ted Pinette, YN 2



LTJG J. D. Wilburn, USNR  
Administrative Officer



WO-1 A. L. Brumfield

The S-1, Administration and Personnel Department, is manned by Personnelmen, Yeomen, and Postal Clerks. The Administrative section prepares, types, files, and routes all Battalion correspondence, instructions, reports, and directives, controls classified materials and maintains officers' records. Personnel maintains personnel records, controls transfers and receipts, and prepares orders. Other services provided by S-1 include legal administration, legal assistance and advice; Post Office operations, including handling of all incoming and outgoing mail and sale of money orders and stamps, and Public Affairs, which is the publicity and public relations part of the Battalion.



LTJG J. M. O'Reilly, USNR  
Personnel Officer



PNC G. P. Mantlow, III





Personnel staff



Admin section



Bobby G. Ratley, YN 3

R. R. "Rocky" Ruiz, SN



R. "Chico" Ruiz, SN

Rudy C. Schnifzer, YN 3



Post Office crew



Peter Scolaro, EAD 3

Charles Swanson, PC 1



Public Affairs office

# S-2

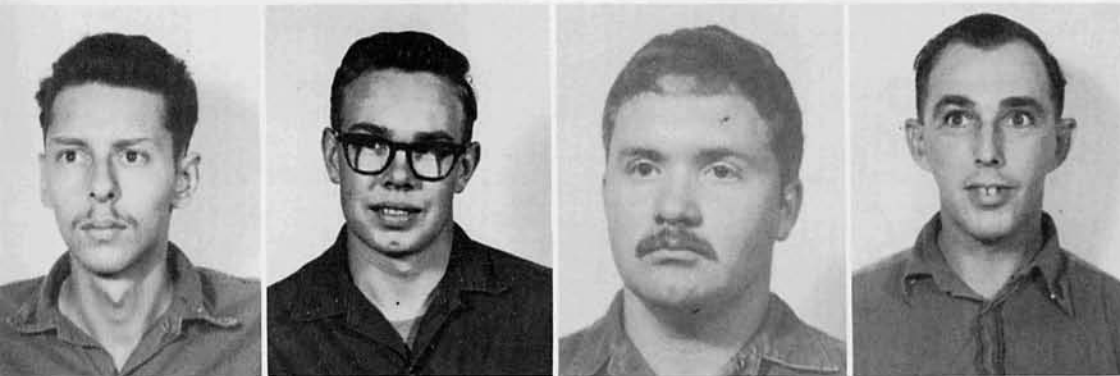
The S-2, Plans and Training Department, insures that all Battalion personnel are properly trained to perform both their military duties and duties of their rating. They organize and implement the homeport training schedules. It is through this Department that all military and advancement in rate examinations are ordered and administered. Information on Naval Training Courses, correspondence courses, and High School and College education is available through this office. S-2 also collects and disseminates intelligence, which keeps the Battalion informed of Viet Cong activity and other world crises that may affect us. The Security element, which means our defensive perimeter, and the operations of the Battalion Command Post both are responsibilities of S-2.



Edward A. Conty, ETN 2

Marvin Crane, UTA 3

Nick Dobey, ETN 2



Frank Leto, ETN 2

C. D. Miller, SN

George Shilling, SN

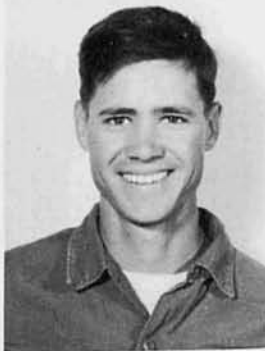
John Van Buskirk, RM 2



# S-3



LCDR C. E. Christenson  
Operations Officer



The S-3, Operations Department, effectively controls and directs the Battalion construction efforts. Every bit of work performed by the Battalion is planned and assigned by S-3. Management information is collected by S-3 to more effectively direct the efforts, by recording all time expended on projects and progress and status of the many jobs assigned. The Surveying Branch performs all preliminary engineering data collection and lays out buildings, stakes roads and grades and locates utilities. The Drafting Section designs, draws, and reproduces plans for project facilities. Quality control, which includes materials testing (concrete, rock, etc.) and soils analysis, and Safety, which insures safe construction practices and determines causes of accidents to prevent recurrence of the same, are two other facets of the S-3.



EAC E. H. Walke



BUCS Kangas

James E. Alley, EAS 2  
Charles E. Ayers, BUR 2  
Mike Brown, EASCN  
Bruce D. Clay, EASCN  
J. A. Crotts, EAD 3  
Ray Lade, CN



CMC "Safety Sam" Sarno



BUC D. K. Robinson





Dennis Dick, PH 1

Jack Fichter, EAD 3

Jerry Hilbert, EAS 2

Roman Hnatowski,  
EAS 3

Willard Howe, EAS 3

Bill Kinney, EA



Hugh M. McIlroy,  
EASCN

Jim Millar, EAD 3

Kenneth Mundt, BUL 3

Frank R. Pirrello, Jr.,  
EAS 3

Thomas A. Pouzzotto,  
CN

Rawlins D. Rile,  
EASCN



Samuel O. Roth, EAD 3

Tom Schell, EAD 3

L. L. Surber Jr., EAD 2

E. D. Taylor, EAD 3

Donald Thompson,  
EAD 3

Richard E. Webb,  
EAS 3

Planning and Estimating

The draftsmen



Surveying crew



# S-4

The S-4, Supply Department, comprises many services. Perhaps closest to all the men's hearts are the three good meals the cooks provide daily. The Disbursing Clerks pay the men twice a month, register allotments, and process travel claims. All greens and 782 gear were procured by the S-4, along with just about every bit of material and piece of gear that the Battalion owns. The Supply Department also ran the most modern barber shop north of Danang. The exchange and laundry, also the most modern in the area, are services provided by S-4. The laundry is a far cry from the Vietnamese laundries utilized by the Marines, where clothes are scrubbed by hand on rocks and hung to dry.



LCDR G. W. Cronin  
Supply Officer



SKC J. E. Carroll



The Supply Office



Albert Ashe, SD 1



Simais Aurelius, CS 1



Gan Caruto, TN



John F. Crasco CS 1



LTJG B. H. McCaleb  
Embarkation Officer



Central Tool Room



Disbursing Section

**1st Row**

Riley Bush, CS 2  
Dalmacio DeClaro, SK 1  
David James, DK 3

**2d Row**

James M. Diebert, CSSN  
Harold T. Edwards, Jr., SK 1  
Jesus P. Florendo, TN

**3d Row**

Robert J. Golueke, SN  
Bill Kressly, SK 1  
Glenn Novotny, CN

**4th Row**

Robert A. Preo, CS 2  
Odie B. Rippy, CS 1  
Marvin Ritter, DK 3





Nelson Sayward, CS 3



William Schmidt, SK 2



Robert Sillery, CS 1



William Trombley, SK 2



Sam Woolard, CS 2



Garth Hubbard,



Douglas Kratzer, CN



Larry Lance, SK 3



Romeo Gameng, TN



Lynn Greenwald, CS 3



Eugene Holoun, CMH 3



Jerry D. Donley, SN



Donald Doyle, SN

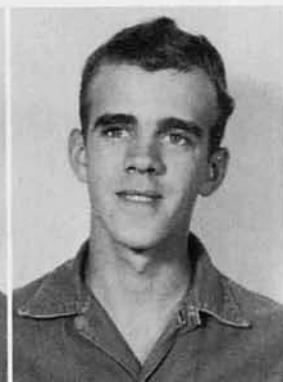


John H. Epps, SH 2





Francisco Hermenegildo,  
TN



Dennis Clinton, SK 3



David Delancey, DK



Jack Moore, SKSN



Al Louis Morin, SN



W. C. Phillips, DK 1



Wayne Richmond, DK 3



Robert Schamens, SK 1



Stanley Shaw, EOH 3



Clarence Thurman,  
CM 1



George E. Yarbrough,  
CS 2





ENS K. W. Lovell  
Special Services Officer  
Assistant S-2





# MEDICAL DEPARTMENT



LT W. A. Bohart, MC, USNR  
Medical Officer



HMC S. E. Allen



Rodney F. Brink, HN



Charles L. Burnette,  
HM 1



Lewis W. Brewer, HM 2



Con Dauphinais



Hugh Lithgow, HM 2



K. Kincaid, HM 1



Roger Poole, HM 2



Cleo T. Pulsifer, HM 1



The corpsmen



# DENTAL DEPARTMENT



Dental technicians clown it up



Frank Valenton, DT 3  
Victor C. Kelly, Jr., DT 3  
James Scheer, DT 1



LT T. A. Schinn, DC, USNR  
Dental officer



SWC Dendinger  
Chief Master-at-Arms



Jack Augustine, GMGSN



George "Duke" Batie

# MASTER AT ARMS

The Gunners mates



Leo J. Coulombe, Jr.,  
CMG 3



MAA Force

# CHAPLAIN'S ACTIVITIES



**Carl W. Erickson**  
LT, CHC, USNR

Chaplain Erickson and his  
assistant, SN Baldus



Coordination was the primary role of the Battalion Chaplain in the Civic Action Program, together with the Battalion Dental and Medical Officers. Working with Mr. Le Hy, the Chief of Thuy Chau Village, the priority of needs were compared to Battalion capabilities.

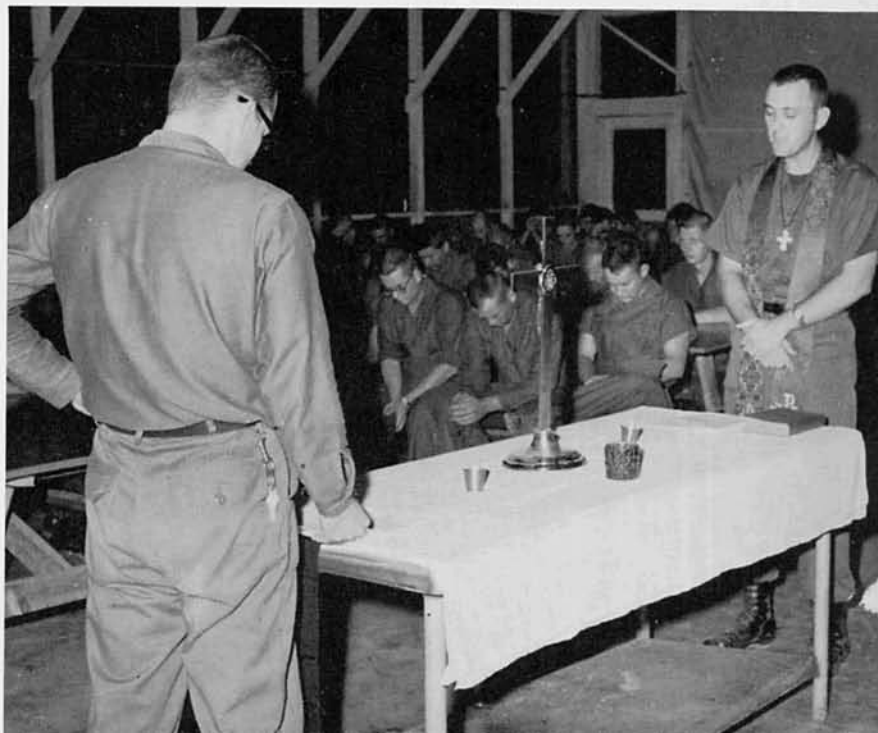
Under the guidance of the Civil Affairs Officer (G-5) of the 3rd Marine Division, the overall Pacification Program came into focus in Thuy Chau Village. Located three miles north of the Seabee Camp and composed of five hamlets, it was the site of MCB 62's Civic Action efforts. Here rapport and confidence was molded from perseverance, aid and the extension of genuine concern for the welfare of the people.

The scope and variety of the Battalion's Civic Action Program is depicted in the Cruise Book on the following pages. It should be emphasized here that the Medical-Civic Action Program-Team's dedication developed the rapport and confidence which made other projects possible to organize and follow through. This was accomplished through the Village Chief, who soon pointed out the importance of a scholarship program. His interest in a scholarship program demonstrated the Vietnamese people's concern for the education of their children.

The children are the important resource for the future of Vietnam. The Vietnamese parents know this and want a better life for their children. The Seabees of 62, with donations, soon provided the capital for the Program.

The Vietnamese are proud of the education system they have maintained in the midst of war. Their desire for assistance in this vital part of their nation's development was further seen as 62 was called upon to work with the Manual Training School in Hue. In a real sense, the work with this technical school became a "mutual aid" program when the school did machine tool work for the Battalion.

The person-to-person touch was important throughout the Civic Action Program, as MCB 62 became involved with meeting the present needs of the people from sickness and injury, to sources of nutrition, and on toward future development through education. The continued coordinated efforts of military units in the Civic-Action-Pacification effort promises to form a solid base for the redevelopment of a war-torn country.





# CHAPLAIN'S CIVIC ACTION PROGRAM IN THUY CHAU VILLAGE, RVN





# CIVIC ACTION PROGRAM OF 62



司會 村上師  
法 話 (日英兩語)  
北條、徳永兩師  
代表 燒香 富田武雄氏  
挨拶 新理事長別府  
米夫氏  
當日の四百二十五ドル  
の献金は特別基金に繰り  
入れられた。  
●今週の映畫  
來る一月二十一日土曜  
午後七時より東寶の「東  
から來た男」と「香港の  
夜」が上映される。  
●破格の賣出し  
元ロイマーケットは







The backbone of MCB 62's Civic Action Program in the village of Thuy Chau was the Medical-Civic Action-Program activity. Operating six days each week, patients came from in and around Thuy Chau. MEDCAP and all the various projects were coordinated with Le Hy, the Village Chief.

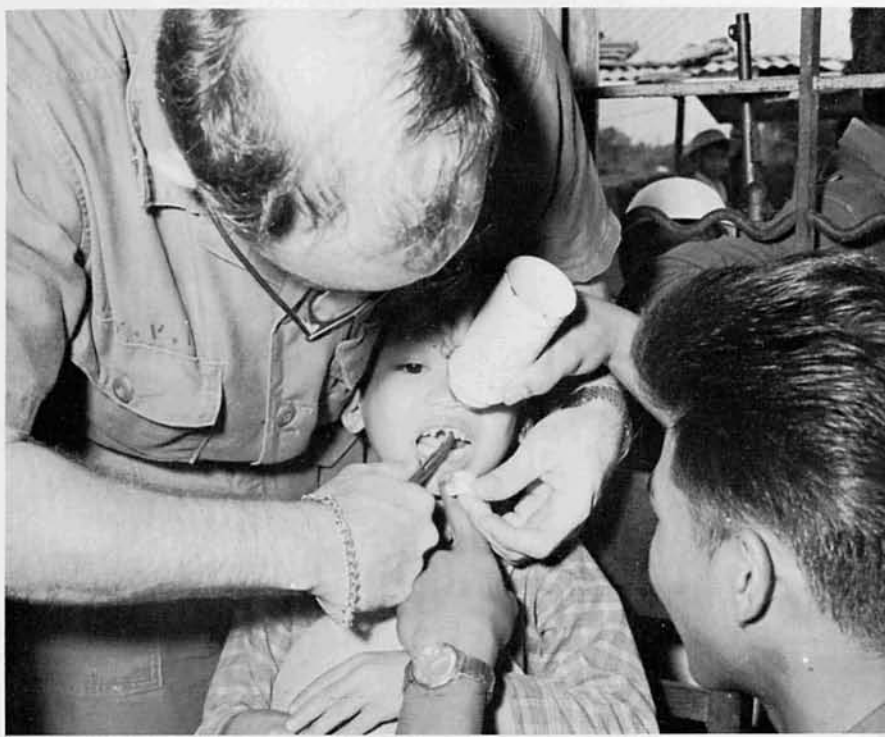
In the course of the program, farmers of Thuy Chau observed the demonstration of a rice thresher from Taiwan and families built new pig pens made available through USAID.

Particularly important in the eyes of Chief Le Hy and the village elders was the Scholarship Fund established with donations from the members of the Battalion. Four High School students and three Elementary School students are currently being supported by this program.

The Than Phu Catholic Orphanage in Thuy Chau was a particularly rewarding project for the Seabees of 62. Visits on Christmas, New Years and the Seabee Birthday were enjoyed by the children and the Seabees. On many other occasions groups of Seabees brought food, clothing, school supplies and building materials to the forty children who lived there.

In addition to work in Thuy Chau Village, MCB 62 was called on to assist the Manual Training School in the Imperial City of Hue. The G-5 Civil Affairs Officer of the III Marine Division contacted the Battalion and 62 responded with an assortment of surveyed materials. An outstanding experience for the students and the Seabees was a tour of Camp Campbell's shops.

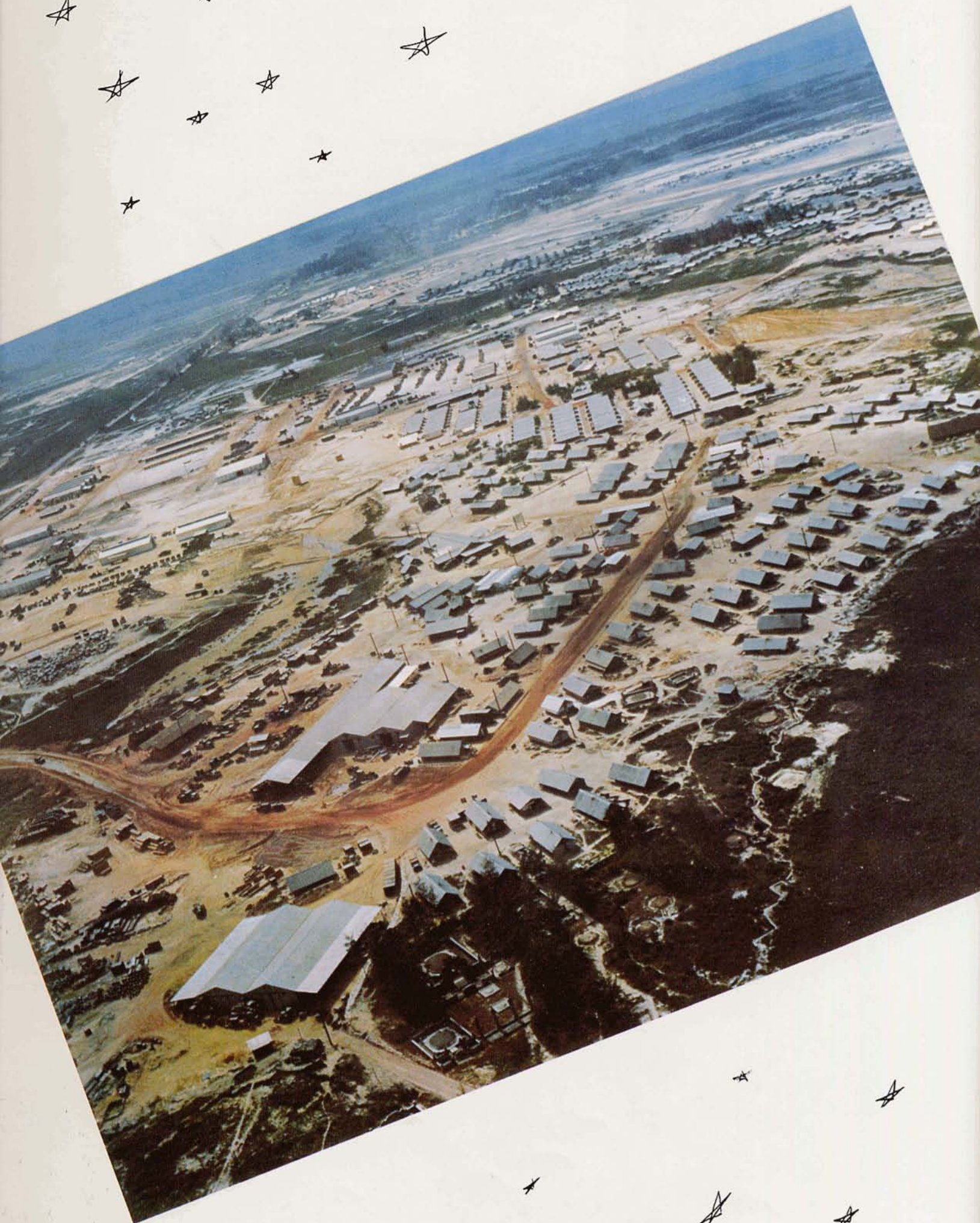
In the Civic Action phase of her involvement in the Vietnam struggle, MCB 62 was proud to do its part in helping the people of Thuy Chau maintain their integrity and improve their way of life.







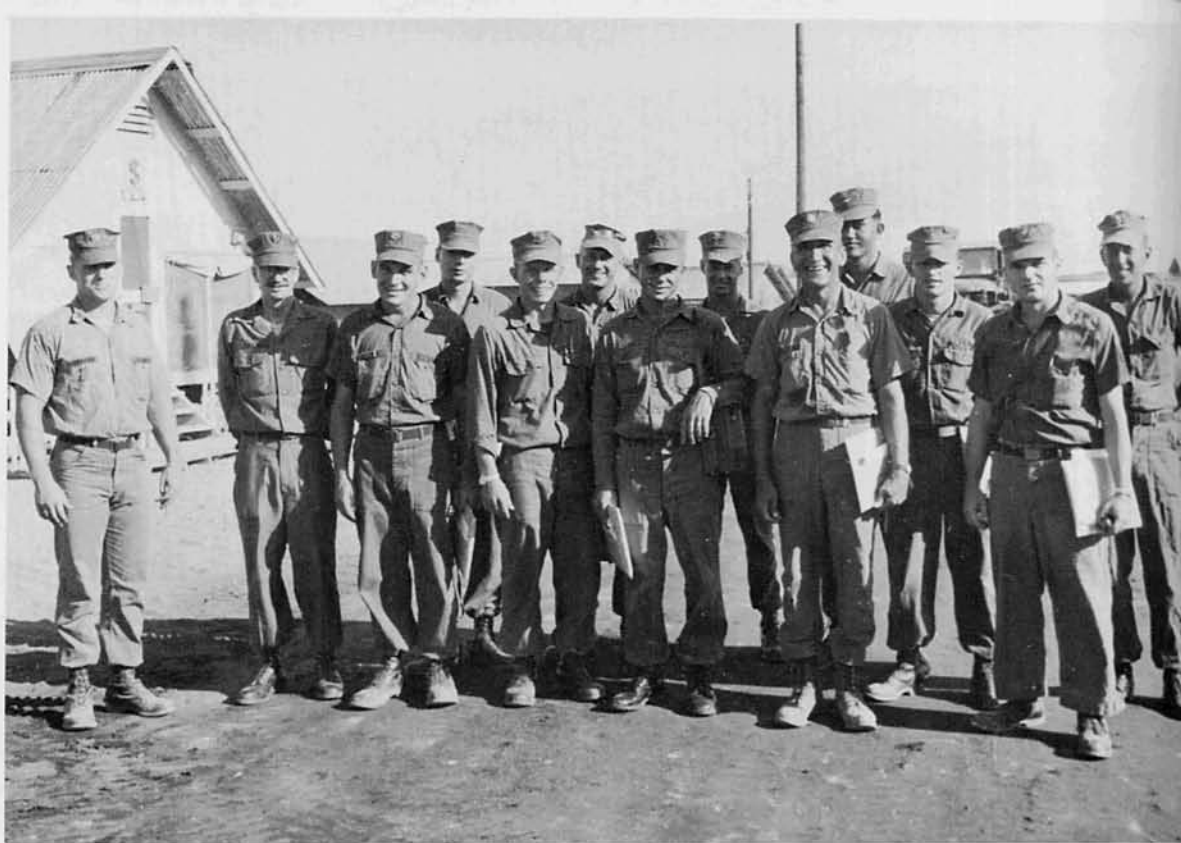












## SEABEE TEAM 6201

Seabee Teams are an important element in the U.S. Aid Program for developing nations. They are particularly useful in countries with a growing problem of Communist insurgency. The teams work to counteract this by going into backward rural areas and helping the people there to improve their standard of living through the use of self-help projects and medical aid. The projects may be schools, roads, wells or other much needed facilities. The medical aid may be dispensed to people as far as a hundred miles from the Seabee Camp, since the Seabee Team coordinates all projects and aid through the village officials; this program tends to increase the people's satisfaction with their local and national governments and thus causes them to become less susceptible to Communist propaganda.

The Navy Seabee Team is well equipped for this type of work. Each team consists of one Civil Engineer Corps Officer and 12 enlisted men. Among this 12 there is one corpsman and at least one man from each group 8 rating. All personnel on the team receive cross rate training so that each develops a good background in all basic construction skills. There is a course in the language of the host country and also training on military subjects ranging from the use of various weapons to survival training.

MCB 62's first Seabee Team, designated 6201, was formed while the battalion was at Phu Bai, RVN, and departed in the late May to CONUS for a leave period prior to starting their four months of training. The members of 6201

are LTJG D. B. HERRMANN, JR., Officer in Charge, UTC I. W. HORNKOHL, Assistant Officer in Charge, EAS2 J. E. ALLEY, UTW 3 T. J. CLINE, HM1 C. F. DAUPHINAIS, CMA2 N. J. FLOWERS, SWF2 D. T. GAINOUS, EOH2 J. HANNA, EON2 L. W. JACKSON, CEW2 G. W. MARTIN, EO1 J. C. PETERSON, BUR2 O. M. PURSIFULL, and CM2 W. D. SEALE. All members of the team began training on 10 July and had successfully completed the Steelworker, Equipment Operator, and Construction Mechanic phase by the time MCB-62 returned from RVN. At this time they are looking forward to the completion of training and a successful deployment.





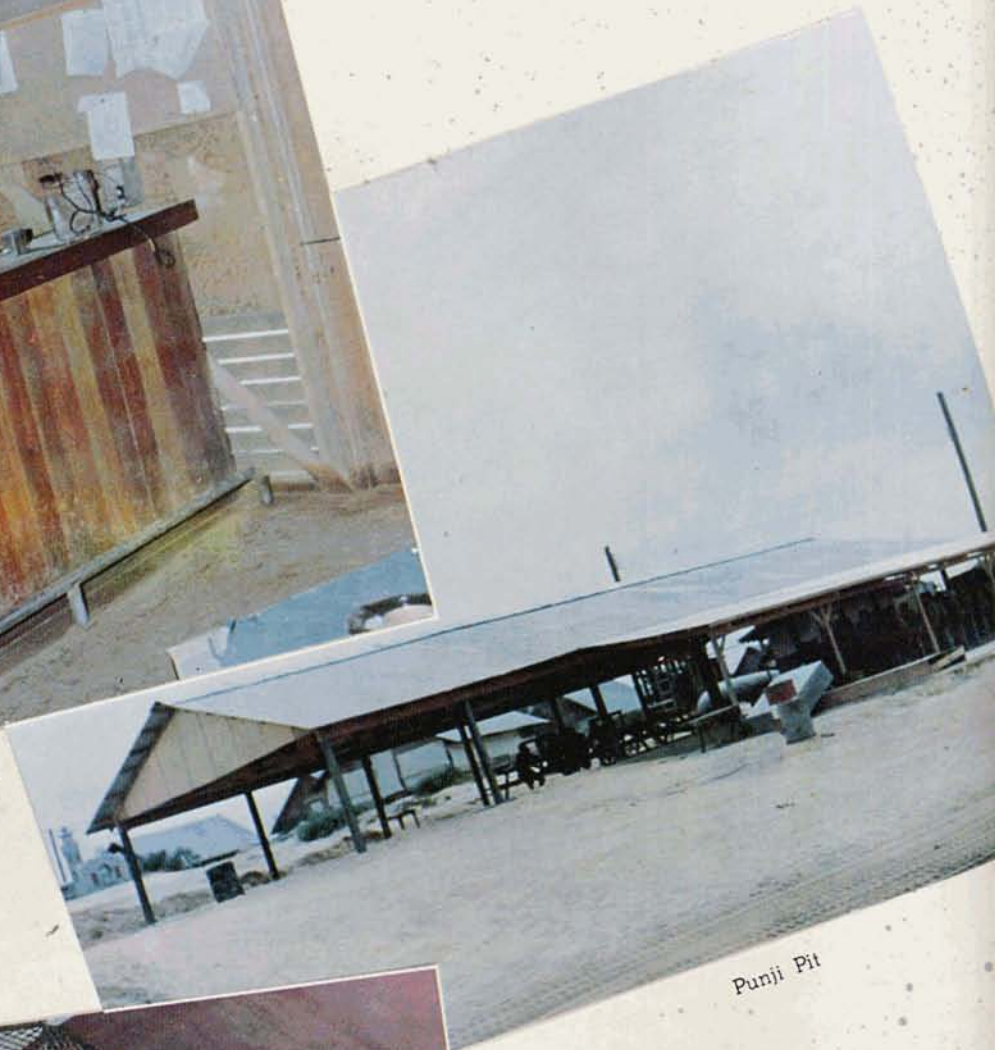
1. L. W. Jackson, D. T. Gainous, and T. J. Cline practice cutting steel at Seabee Team Training's Steelworker Shop.
2. J. E. Alley, C. F. Dauphinais, and O. M. Pursifull rip lumber for tapered canopy beams.
3. Members of Seabee Team 6201 at work constructing Seabee Reception Center at Gulfport Airport.
4. Gutter is raised into position between Butler Buildings.
5. Members of 6201 and 13301 prepare to march to POW Compound.
6. Members of Seabee Teams 6201 and 13301 await interrogation during POW Training.
7. W. D. Seale, L. W. Jackson, N. J. Flowers, and J. Hanna attach siding to Butler Building as Chief I. W. Hornkohl supervises.



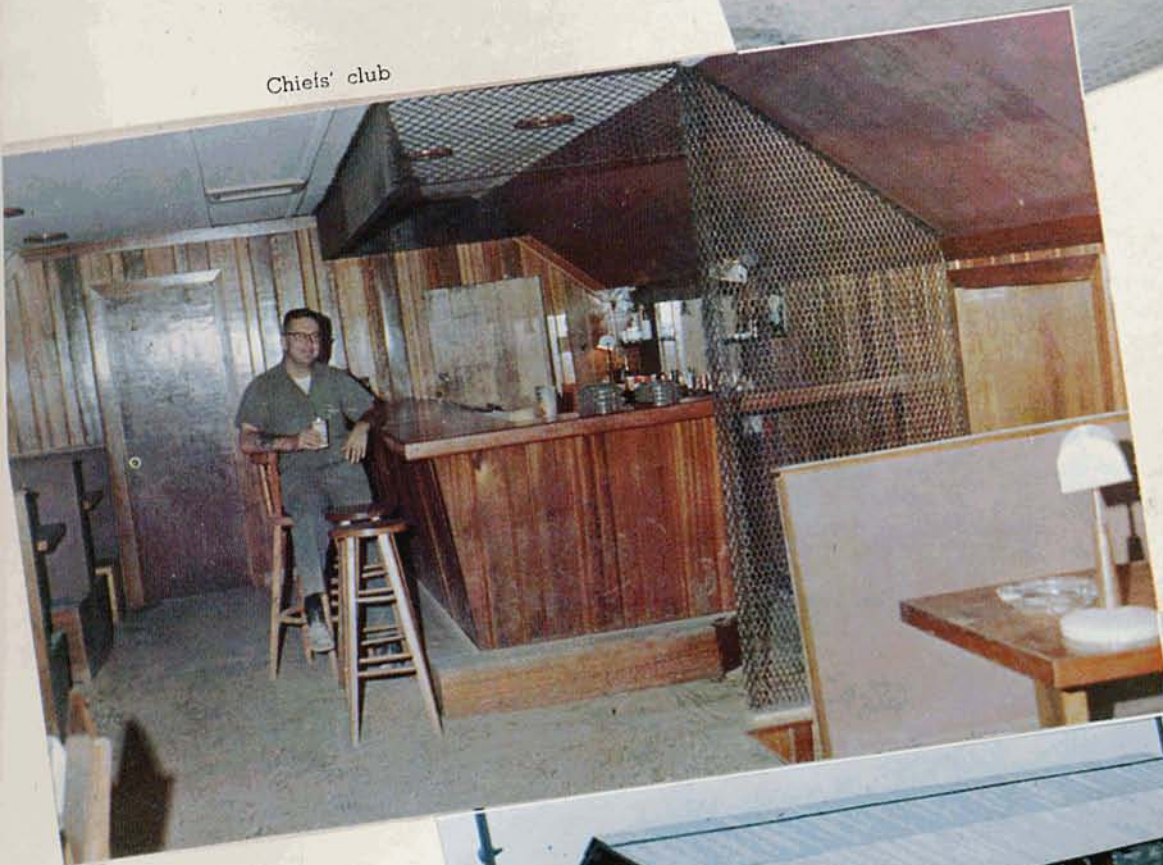




Officers' wardroom



Punji Pit



Chiefs' club



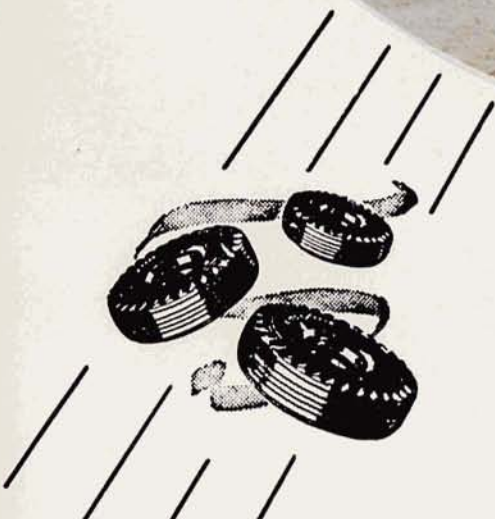
Acey-Deucey club



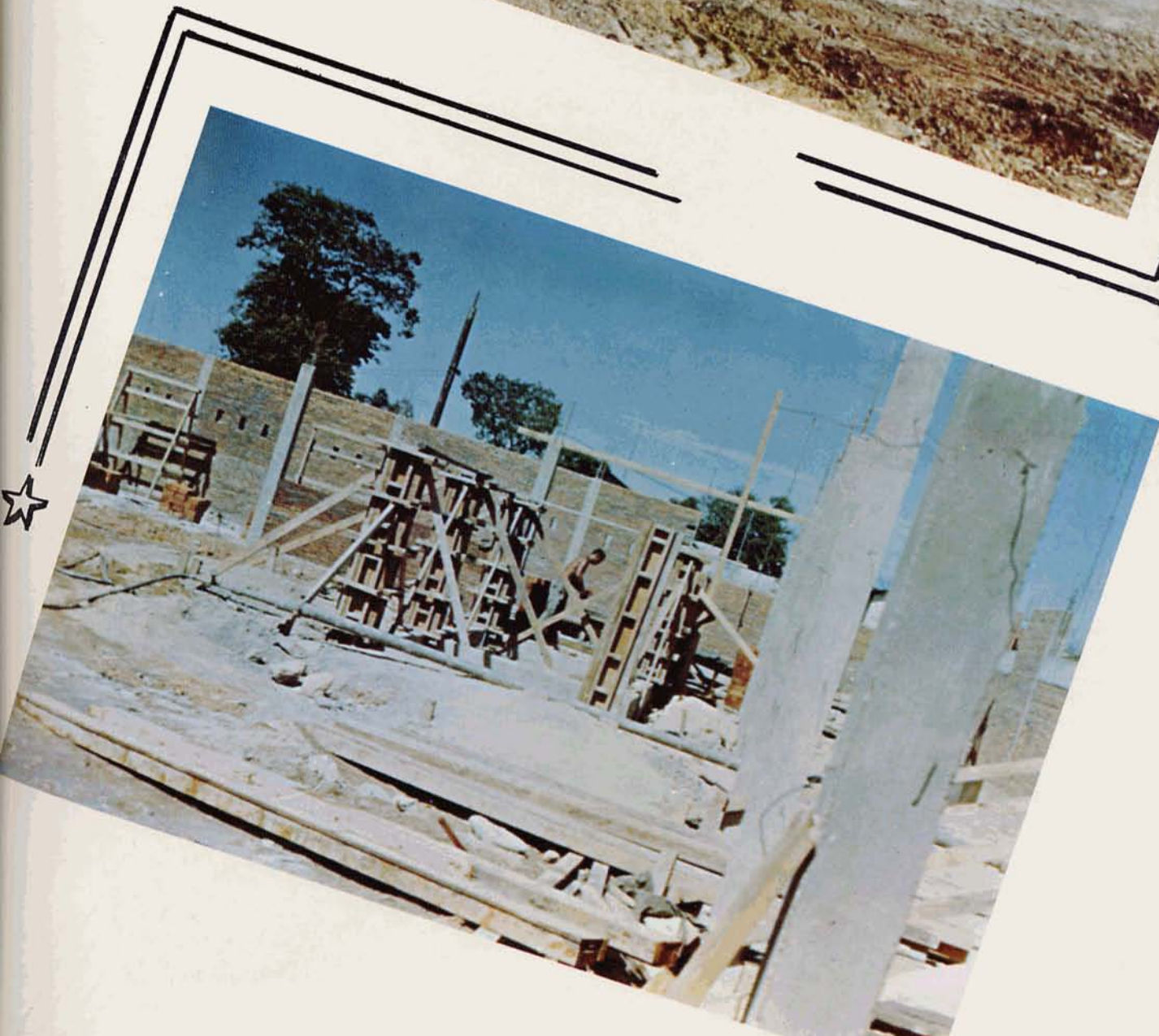










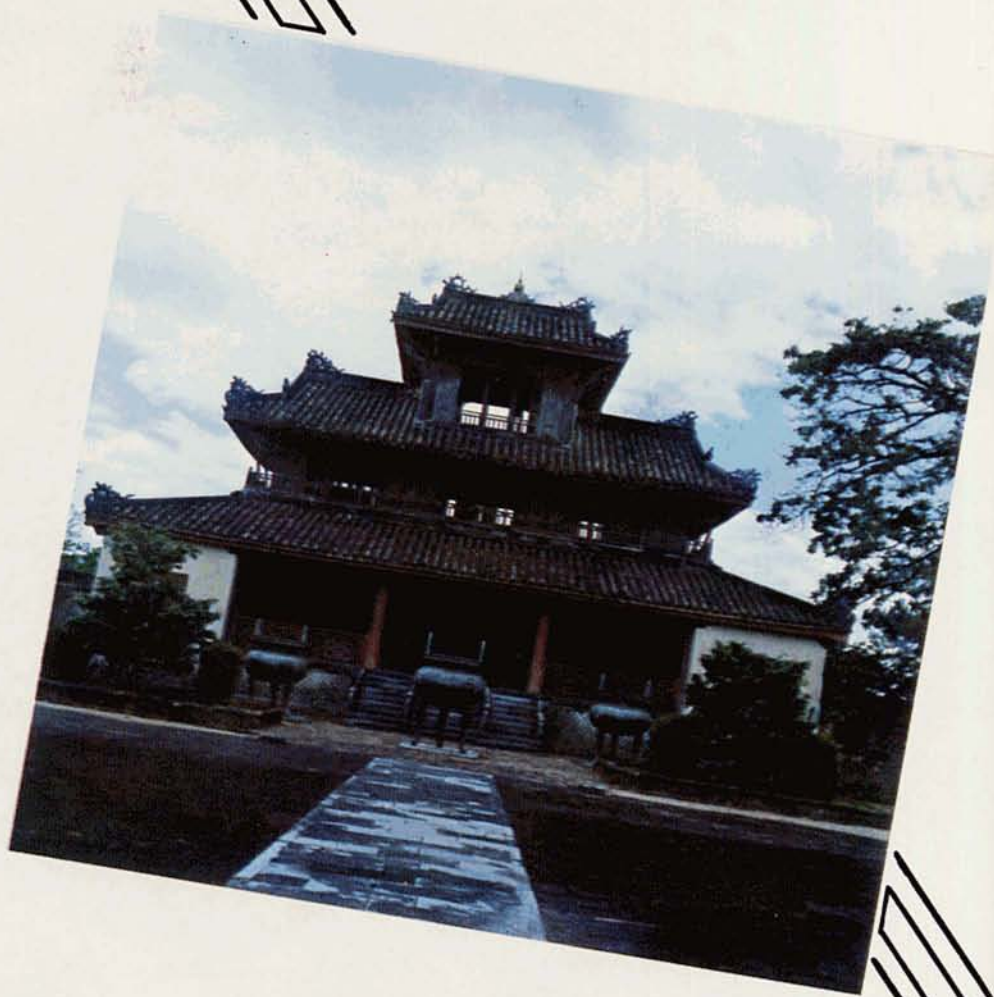




本心



浮氣









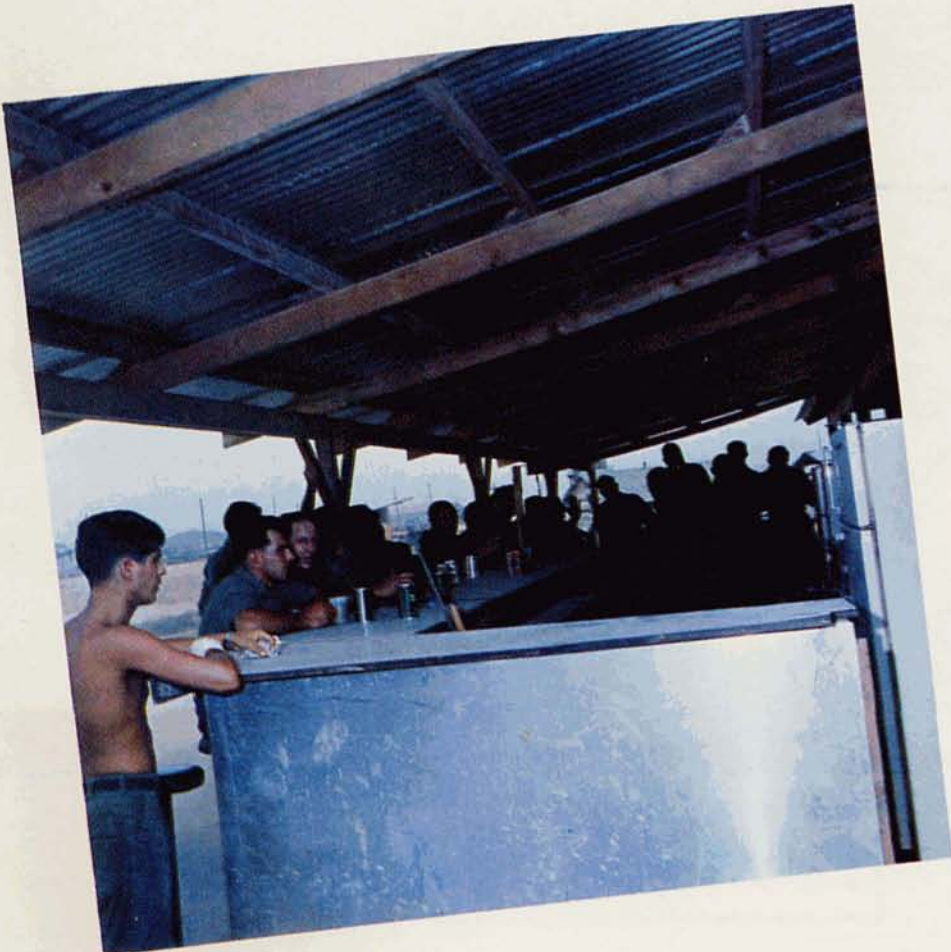




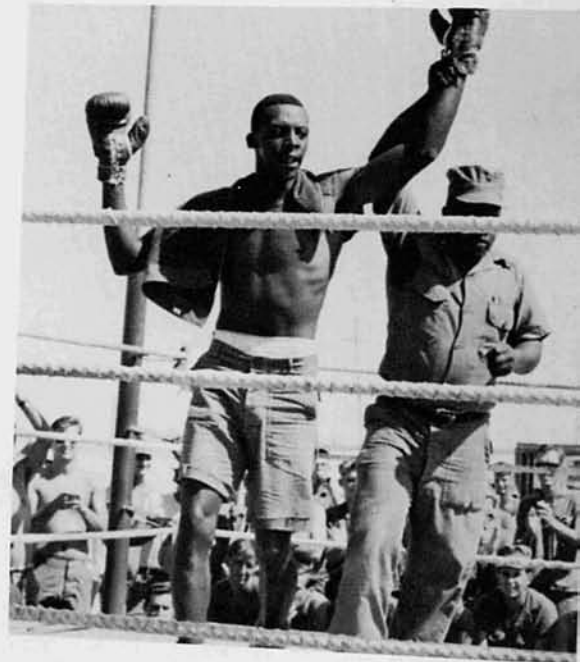


は日ソ貿易協定関係の  
 人、アフリカへセン  
 の貿易にでかける青年  
 二度目の訪ソの婦人の  
 三人。アフリカへ行く  
 青年はソ連経由は初め  
 てで、「夏服しか持っ  
 てない」といつていた  
 がそれでも防寒コート  
 を取りだして羽織り、  
 甲板で耐寒訓練をやつ  
 ていた。その頃船は岩  
 手縣沖を通つていた。  
 おもつたほど訓練には  
 ならない」とこぼした  
 ら、まだ日本領海だ、  
 と笑われていた。訪ソ  
 二度目の女性には「冬の  
 モスクワが一番だとい



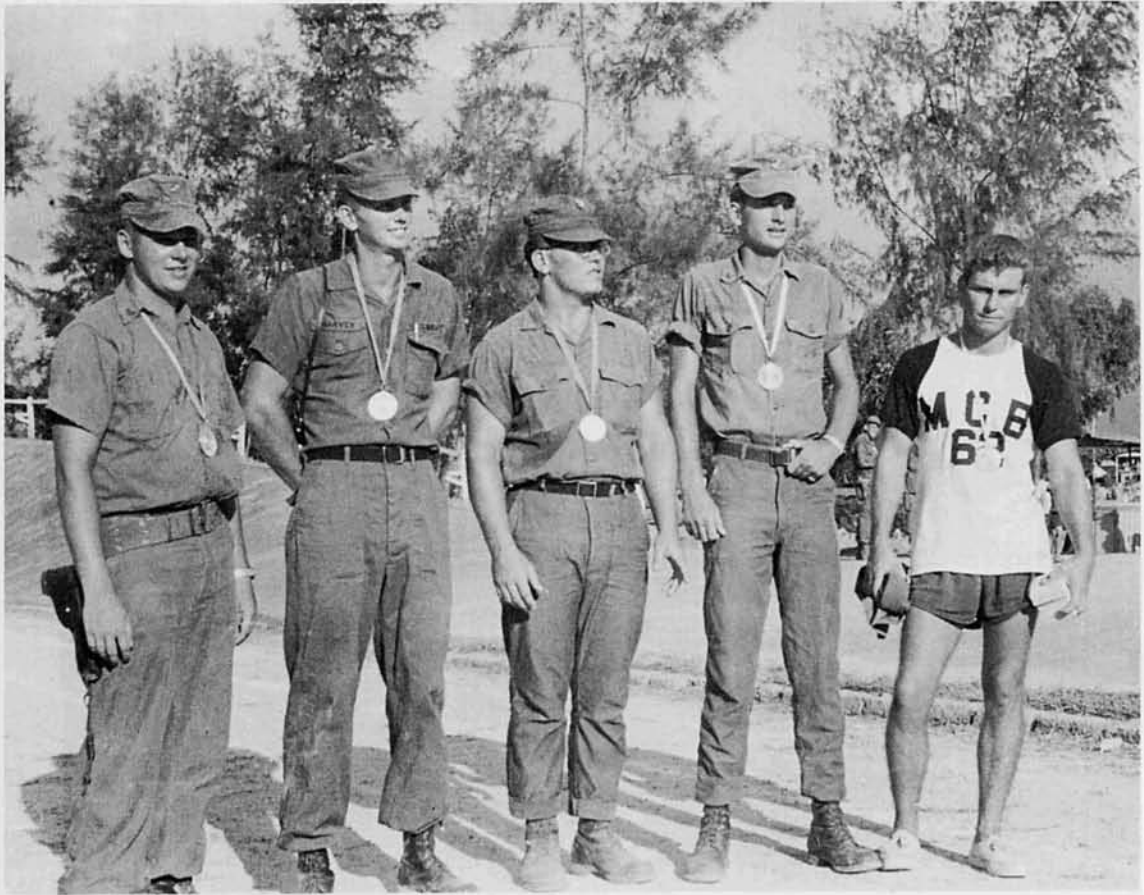


# SPORTS





# HUE OLYMPICS



# USO SHOWS





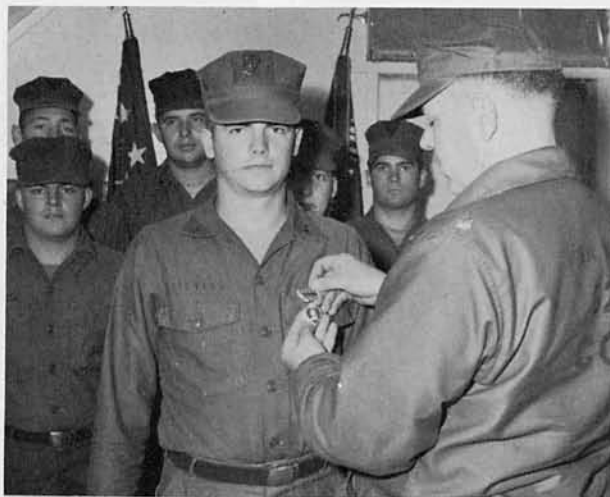
# AWARDS AND COMMENDATION



Medical and Dental Departments being awarded Letters of Commendation for their outstanding job during the Jan. 20 mortar attack.



Some of the men wounded during the Jan. 20 mortar attack on Camp Campbell.



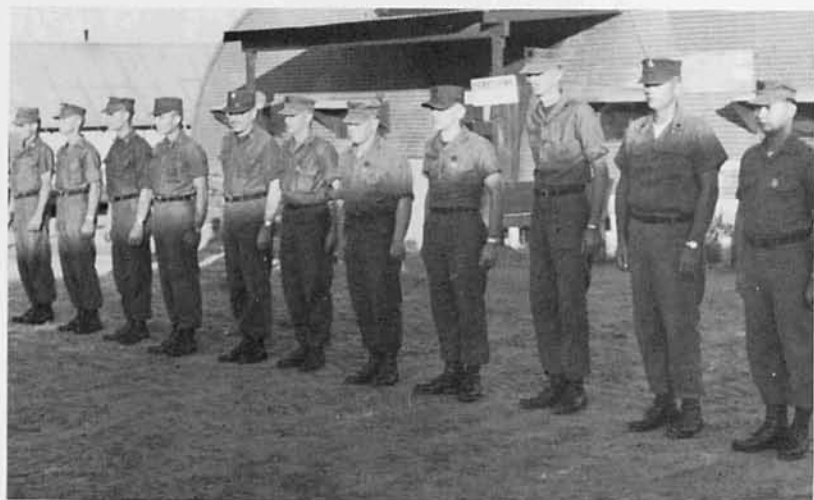
EON3 J. D. Lefevere receiving 62's first Purple Heart for wounds from a Viet Cong grenade.



Alpha, Bravo and Charlie personnel receiving various awards.



Headquarters personnel receiving awards.



Various Battalion personnel receiving awards earned.

Personnel from Alpha Company with advancement in rate certificates and diplomas for a school completed.



BU13 L. E. Miller receives a Letter of Commendation for his actions during mortar attack.



# RE-ENLISTMENTS



EON2 A. F. McFarlane was one of many who shipped over in RVN.



BUI R. F. Krause ships over for six more years in the "Bees."



SD2 T. E. Espine (top) and PN2 A. Adelung (bottom) also shipped over while in Phu Bai.

## CHIEFS INITIATION

The traditional CPO initiation is held on the day a man is advanced from E-6 to E-7. It is a long standing ceremony used to greet a man to the ranks of Chief Petty Officer in the Navy. Traditionally, the man is issued a set of orders and a uniform of the day and ordered to the CPO Club Trial. He is generally escorted in the morning at various offices to do minor jobs for the CPO's of his unit. His noon meal, which is always excellent, is served in a hog trough. After lunch the candidate is brought to trial, charged and fined. Upon completion of the trial and payment of the fine, the usual dip in the pool is conducted and the man is welcomed to the ranks of the Chief Petty Officers.



Chiefs T. C. Galey, C. E. Delancy and P. S. Morris enjoy a cooling dip in water enriched with various miscellaneous products.

Newly advanced Chiefs G. P. Campbell, HMC from 3rd Med Bat., L. W. Copeland and R. A. Monsrud sing out a tune as part of their initiation to E-7.

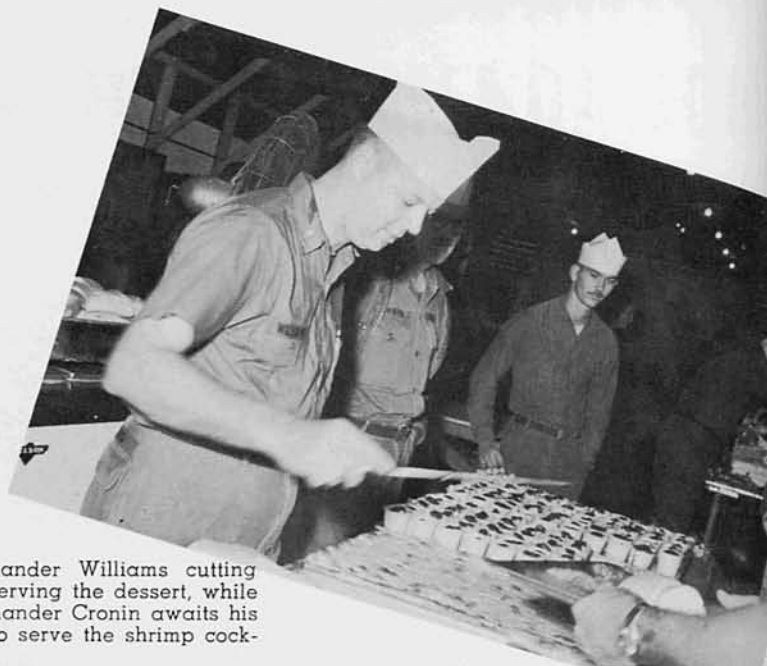




# SEABEE BIRTHDAY!



Commander Richeson being greeted by "Pappy" Lemon during the Captain's serving of the Anniversary cake.



Commander Williams cutting and serving the dessert, while Commander Cronin awaits his turn to serve the shrimp cocktail.



Company Commanders serving the main course of the Anniversary meal to men of the Battalion.

March 5, 1967 was a day that was celebrated with an extra measure of enthusiasm. It marked the 25th Anniversary of the Seabees and the 100th Anniversary of the Civil Engineer Corps.

The day began with no reveille being held and breakfast lasting from 0800 to 1200 for all those who took advantage. During the morning, many sporting events were held. There were boxing events against the Marines and a softball game between the Officers and Enlisted men. Free beer could be had at the Punji Pit.

The Anniversary dinner was held at 1600 with all the Officers doing the honors of serving the men. The Third Marine Division Band played most of the afternoon and as a nightcap, Special Services again brought the "Wilma Reading Show" back. All in all, it was a day to remember.



It doesn't matter what kind of special occasion there is, everybody still has to use the same washing facilities.



The war still goes on, holiday or not.

# MORTAR ATTACK



During the mortar attack of April 28, this Butler building, being completed for the Third Marine Division, took two direct 82mm mortar hits.



One of the two MCB SIXTY-TWO huts that took direct hits from Viet Cong 82mm mortars during the attack on Phu Bai, Jan. 20.



The tire of this MRS had a chunk blown out of it by a Viet Cong land mine while working at the Gia Lo rock quarry.

This was the other hut which was hit on that rainy day in January.







# THE FACES OF THE PEOPLE

Wisdom comes only with age.

解放軍、毛支持示す



"Vina, anyone?"



At 16, boys become men.



Street scene.



Crossing the Song Nong.





1



2



4

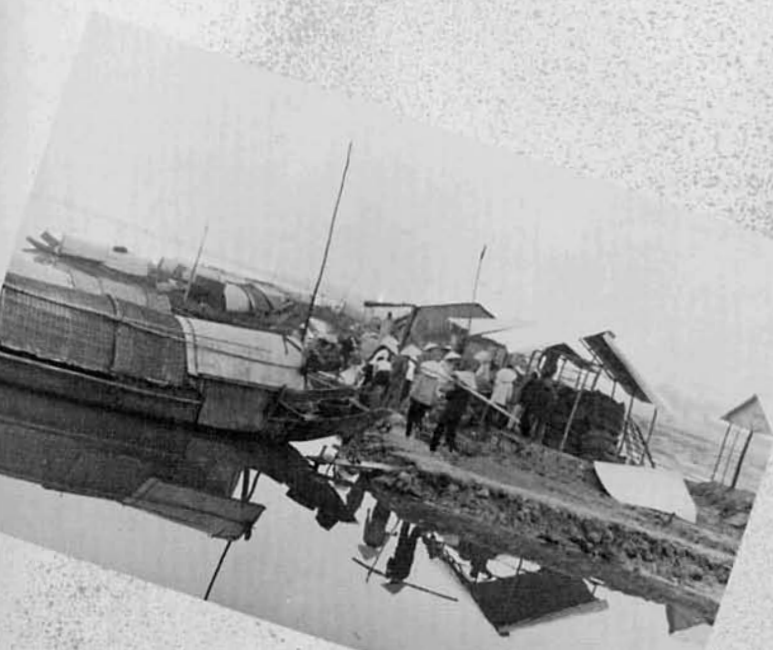


3



1. "Sanpan Alley"
2. War damage
3. Working the ice bowl of Asia
4. "V" for Victory and Vietnam
5. The farmers' market
6. Floating market enroute to Colco Beach
7. "Shave and a haircut . . ."

香港





香港風光美麗，景色宜人









# Survey Team Braves Cong To Map Planned Roadway



EAD3 Jim Millar, kneeling, and the Survey Party ran a tape nine miles in three days.



An ambush at Xuan O quickly broken by Fox Company, 2/9 Marines.



Waiting for pick-up.



Bees and Marines join forces and mount out.

A team of MCB-62 surveyors returned from a project Feb. 24 looking, talking and acting like infantry Marines.

The men had spent four days in the field surveying a road that is to be built into VC-held territory. They lived in the field during the project, and had to contend with active opposition from the Viet Cong.

The team consisted of LCDR Carl E. Christenson, LT Neumann, Operations Officer of MCB-133, EAC Cormeyer and Gunnery Sergeant Flowers of MCB-133, EAC Earl H. Walke, EA1 William T. Kinney, EAS2 James E. Alley, EAD-3's James Millar and Tom Schell, BUL3 William Dacey, PH2 Charles Dick and HM2 Roger Poole.

The team started on the trek Feb. 20 accompanied by Fox Company of the 2nd Battalion, 9th Marines. They took off in helicopters from the Phu Bai Airport and flew to the jumping off point across the Dai Giang River.

They landed in a rice paddy and went to work, the Marines setting up security completely around the Bees. That first day two miles of existing road was surveyed. This was simply a bearing and location survey—a finer survey would be taken later.

Most of the day and night saw the Marines uncovering booby traps, along with fire fights with the Viet Cong.

The team started again bright and early the next day. They again covered a two-mile stretch of roadway. Plenty of sniper fire was received, but no one was injured. Still more booby traps were uncovered by the Marines throughout the day.

That night was quieter, because gunship helicopters and artillery kept the VC away. The party slept in an abandoned village.

Feb. 23 saw the most progress since the survey that day led through open country. The team covered five miles without any trouble.

Then in the late afternoon came an ambush by Viet Cong. The Marines again beat the enemy back without any casualties.

Spotter planes circling above spotted more VC coming and the team with its Marine escort, luckily finished with the survey, packed up and hot footed to its destination three miles away. They reached their goal, a Vietnamese Popular Forces camp, just before nightfall. The party spent the night there.

The next day they checked to see that everything was done and then they were airlifted back to Phu Bai. The Seabee survey team accomplished its mission and as a bonus the Marines captured three Viet Cong suspects and three tons of rice.

# MCB 62 CONSTRUCTION STATISTICS

## Building Construction

<u>Wood Frame</u>			
DESCRIPTION	SQ. FT.	QTY.	TOTAL SQ. FT.
16' x 32' SEA Hut	512	335	171,520
16' x 32' Tent Conversion	512	65	33,280
16' x 32' Strongback Tents	512	12	6,144
16' x 64' Galley	1,024	1	1,024
250 Man Galley	2,880	2	5,760
400 Man Galley	3,200	1	3,200
500 Man Galley	5,760	1	5,760
16' x 16' Showers	256	2	512
16' x 32' Showers	512	2	1,024
16' x 64' Showers	1,024	1	1,024
2 Hole Heads	30	6	180
4 Hole Heads	64	2	128
8 Hole Heads	80	24	1,920
TOTAL: 232,136 Sq. Ft.			

<u>Rigid Frame</u>			
Pre-engineered Steel Building (Butler)	4,000	36½	146,000
SATS Hangers	2,400	3	7,200
Quonsets	960	3	2,800
TOTAL: 156,000 Sq. Ft.			

<u>Special Building Construction</u>		
Hue Interrogation Center		5,500
Dial Central Office		2,400
TOTAL: 7,900 Sq. Ft.		

TOTAL BUILDING CONSTRUCTION SQUARE FEET: 396,036

## Other Construction

VMO Parking Apron and M8A1 over T-17 Extension:  
858,500 sq. ft. soil cement apron w/asphalt surface treatment

315,000 sq. ft. 8" thick laterite base (extension)  
315,000 sq. ft. T-17 membrane (extension)  
315,000 sq. ft. M8A1 steel matting (extension)  
6,400 L.F. drainage ditches  
200 L.F. 24" metal culvert  
200 L.F. 36" metal culvert  
880 L.F. 8" pipe for fuel lines  
2-5 bladder fuel berms  
2-3 bladder fuel berms

### Towers:

7-50' mortar observation towers

### Bridges:

3 timber bridges-redecked

### Hue LCU Ramp:

105,000 Sq. Ft. 6" lift 4" minus rock w/double surface RC300 treatment  
1,300 L.F. 8" high barbed wire fence  
36-500 watt floodlights  
60 L.F. 12" culvert

### Fence

7,000 L.F. chain link fence — FLSG Alpha

### Wells

3 deep wells  
1 shallow well

### Phu Bai Water Distribution System:

25,000 L.F. of 4", 6", 8" pipe  
Water treatment plant — 250,000 gal/day  
Two elevated towers 30' high  
Earth fill dam w/concrete spillway

### Phu Bai Electrical Distribution System:

31 miles of power line  
Installation of two 700KW MUSE generators

### Roads:

19,000 L.F. laterite base & 6" lift 4" minus rock — III Marine Division  
11,000 L.F. scarified & repaved — RVN Rt. 1 in Combat Base  
16,000 L.F. chuckhole repair — RVN Rt. 1 North of Combat Base  
60,000 L.F. emergency repairs — Colco Road





# GOING HOME!



Muster on the basketball court;—the one muster you didn't want to miss.

The last few hours were the longest.



C-130 — first class accommodations.



December, 1966, to August 1967.





"Daddy's home!!"



"Hi, honey".

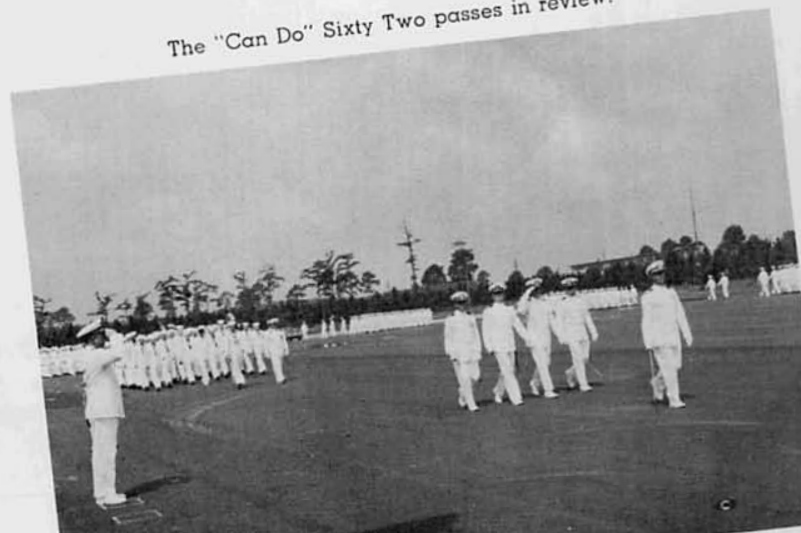


One picture is worth a thousand words.

Every Seabee's a hero today.



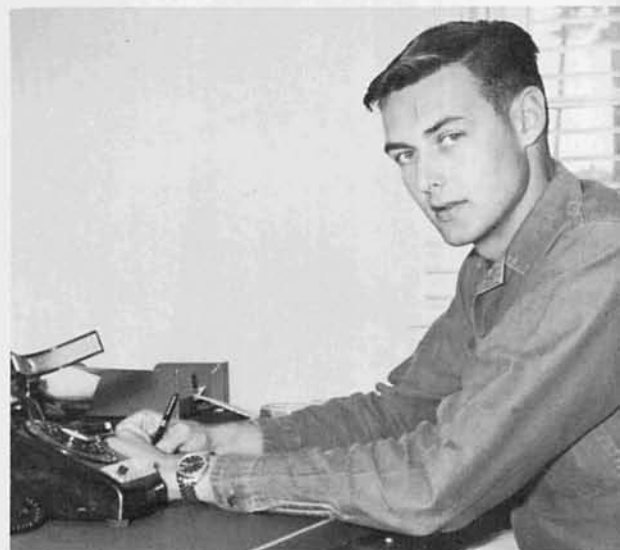
The "Can Do" Sixty Two passes in review.







# CRUISEBOOK STAFF



If, in the future as you look thru the pages of this Cruise Book, you discover a long forgotten memory of your deployment with MCB 62, then the Staff of this book will have accomplished its job.

Editor



NORTH  
VIETNAM

GULF OF TONKIN

LAOS

MCB 62

HUE - PHU BAI

DA NANG

THAILAND

QUANG NGAI

BONG S

QUI

PLEIKU

DAK TO

PLEI ME

SOUTH  
VIET  
NAM

CAMBODIA

LOC NINH

BIEN HOA

SAIGON

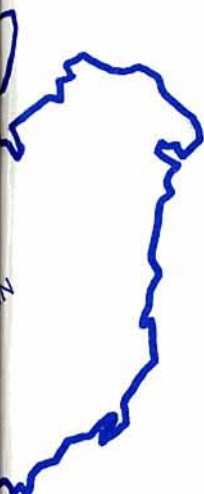
PHAN THIET

GULF OF SIAM

VINH LONG

PHU VINH





為東方旅遊勝地。

NHA TRANG

CAM RANH

SOUTH  
CHINA SEA

MCB 62

1967





